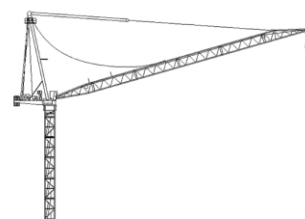
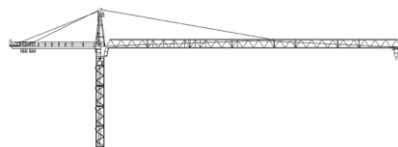


Course packet	location	Calendar week	date	Course duration	registration
221E1/E2	Heilbronn	2	11.01.21 – 15.01.21	5 Tage	
421E1/E2	Heilbronn	4	25.01.21 – 29.01.21	5 Tage	
621E1/E2	Heilbronn	6	08.02.21 – 12.02.21	5 Tage	
821E1/E2	Heilbronn	8	22.02.21 – 26.02.21	5 Tage	
1021E1/E2	Heilbronn	10	08.03.21 – 12.03.21	5 Tage	
1221E1/E2	Heilbronn	12	22.03.21 – 28.03.21	5 Tage	
1521E1/E2	Heilbronn	15	12.04.21 – 16.04.21	5 Tage	
1721E1/E2	Heilbronn	17	26.04.21 – 30.04.21	5 Tage	
2021E1/E2	Heilbronn	20	17.05.21 – 21.05.21	5 Tage	
4021E1/E2	Heilbronn	40	04.10.21 – 08.10.21	5 Tage	
4221E1/E2	Heilbronn	42	18.10.21 – 22.10.21	5 Tage	
4521E1/E2	Heilbronn	45	08.11.21 – 12.11.21	5 Tage	
4721E1/E2	Heilbronn	47	22.11.21 – 26.11.21	5 Tage	
4921E1/E2	Heilbronn	49	06.12.21 – 10.12.21	5 Tage	
Course packet E1 includes control system with HITACHI-PLC					
Course packet E2 includes control system with SIEMENS-PLC					



If you are interested, please contact ✉ training@wolffkran.de

Please note:

For „K“ climbing course is an individual agreement with the customer required. The training will take place at customer's site.

The „M“ theory course will take place in the training centre Heilbronn or at customers location. The „P“ praxis course will take place at customers location.

„E“ courses will take place at the training centre in Heilbronn.

„E“ course starts on the first day at 11:00am. The other days will be start at 08:00am and finish at 04:00pm. On the last day the course will be end at 12:00am.

Other trainings combinations are possible.

