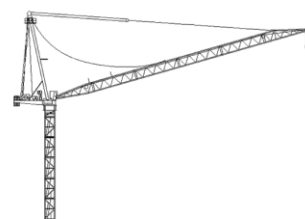


Course packet	location	Calendar week	date	Course duration	registration
320E1/E2	Heilbronn	3	13.01.20 – 17.01.20	5 Tage	
520E1/E2	Heilbronn	5	27.01.20 – 31.01.20	5 Tage	
720E1/E2	Heilbronn	7	10.02.20 – 14.02.20	5 Tage	
920E1/E2	Heilbronn	9	24.02.20 – 28.02.20	5 Tage	
1120E1/E2	Heilbronn	11	09.03.20 – 13.03.20	5 Tage	
1320E1/E2	Heilbronn	13	23.03.20 – 27.03.20	5 Tage	
1720E1/E2	Heilbronn	17	20.04.20 – 24.04.20	5 Tage	
1920E1/E2	Heilbronn	19	04.05.20 – 08.05.20	5 Tage	
4120E1/E2	Heilbronn	41	05.10.20 – 09.10.20	5 Tage	
4320E1/E2	Heilbronn	43	19.10.20 – 23.10.20	5 Tage	
4520E1/E2	Heilbronn	45	02.11.20 – 06.11.20	5 Tage	
4720E1/E2	Heilbronn	47	16.11.20 – 20.11.20	5 Tage	
4920E1/E2	Heilbronn	49	30.11.20 – 04.12.20	5 Tage	

Course packet E1 includes control system with HITACHI-PLC

Course packet E2 includes control system with SIEMENS-PLC

If you are interested, please contact ✉ [training@wolffkran.de](mailto:training@wolffkran.de)



**Please note:**

For „K“ climbing course is an individual agreement with the customer required. The training will take place at customer's site.

The “M” theory course will take place in the training centre Heilbronn or at customers location. The “P” praxis course will take place at customers location.

“E” courses will take place at the training centre in Heilbronn.

“E” course starts on the first day at 11:00am. The other days will be start at 08:00am and finish at 04:00pm. On the last day the course will be end at 12:00am.

Other trainings combinations are possible.

