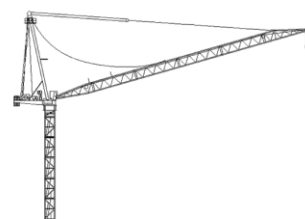


Course packet	location	Calendar week	date	Course duration	registration
219E1/E2	Heilbronn	2	07.01.19 – 11.01.19	5 days	booked out
419E1/E2	Heilbronn	4	21.01.19 – 25.01.19	5 days	booked out
619E1/E2	Heilbronn	6	04.02.19 – 08.02.19	5 days	booked out
819E1/E2	Heilbronn	8	18.02.19 – 22.02.19	5 days	
1119E1/E2	Heilbronn	11	11.03.19 – 15.03.19	5 days	
1319E1/E2	Heilbronn	13	25.03.19 – 29.03.19	5 days	
1519E1/E2	Heilbronn	15	08.04.19 – 12.04.19	5 days	
1919E1/E2	Heilbronn	19	06.05.19 – 10.05.19	5 days	
2119E1/E2	Heilbronn	20	20.05.19 – 24.05.19	5 days	
4119E1/E2	Heilbronn	41	07.10.19 – 11.10.19	5 days	
4319E1/E2	Heilbronn	43	21.10.19 – 25.10.19	5 days	
4519E1/E2	Heilbronn	45	04.11.19 – 08.11.19	5 days	
4719E1/E2	Heilbronn	47	18.11.19 – 22.11.19	5 days	
4918E1/E2	Heilbronn	49	02.12.19 – 06.12.19	5 days	

Course packet E1 includes control system with HITACHI-PLC

Course packet E2 includes control system with SIEMENS-PLC

If you are interested, please contact ✉ training@wolffkran.de



Please note:

For „K“ climbing course is an individual agreement with the customer required. The training will take place at customer's site.

The „M“ theory course will take place in the training centre Heilbronn or at customers location. The „P“ praxis course will take place at customers location.

„E“ courses will take place at the training centre in Heilbronn.

„E“ course starts on the first day at 11:00am. The other days will be start at 08:00am and finish at 04:00pm. On the last day the course will be end at 12:00am.

Other trainings combinations are possible.

