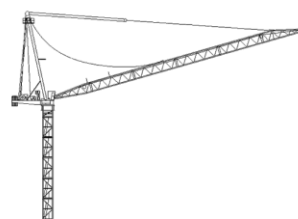
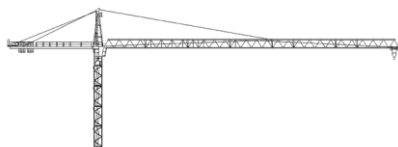


Course packet	location	Calendar week	date	Course duration	registration
218E1/E2	Heilbronn	2	08.01.18 – 12.01.18	5 days	
418E1/E2	Heilbronn	4	22.01.18 – 26.01.18	5 days	booked out
618E1/E2	Heilbronn	6	05.02.18 – 09.02.18	5 days	booked out
818E1/E2	Heilbronn	8	19.02.18 – 23.02.18	5 days	booked out
1018E1/E2	Heilbronn	10	05.03.18 – 09.03.18	5 days	booked out
1218E1/E2	Heilbronn	12	19.03.18 – 23.03.18	5 days	booked out
1518E1/E2	Heilbronn	15	09.04.18 – 13.04.18	5 days	booked out
1718E1/E2	Heilbronn	17	23.04.18 – 27.04.18	5 days	
2018E1/E2	Heilbronn	20	14.05.18 – 18.05.18	5 days	booked out
2618E1/E2	Heilbronn	26	25.06.18 – 29.06.18	5 days	booked out
4118E1/E2	Heilbronn	41	08.10.18 – 12.10.18	5 days	booked out
4318E1/E2	Heilbronn	43	22.10.18 – 26.10.18	5 days	booked out
4518E1/E2	Heilbronn	45	05.11.18 – 09.11.18	5 days	booked out
4718E1/E2	Heilbronn	47	19.11.18 – 23.11.18	5 days	booked out
4918E1/E2	Heilbronn	49	03.12.18 – 07.12.18	5 days	booked out

Course packet E1 includes control system with HITACHI-PLC

Course packet E2 includes control system with SIEMENS-PLC



If you are interested, please contact ✉ [training@wolffkran.de](mailto:training@wolffkran.de)

**Please note:**

For „K“ climbing course is an individual agreement with the customer required. The training will take place at customer's site.

The „M“ theory course will take place in the training centre Heilbronn or at customers location. The „P“ praxis course will take place at customers location.

„E“ courses will take place at the training centre in Heilbronn.

„E“ course starts on the first day at 11:00am. The other days will be start at 08:00am and finish at 04:00pm. On the last day the course will be end at 12:00am.

Other trainings combinations are possible.

