

PRESS RELEASE

WOLFF on a Narrow Ridge: Complete Solution for the Complex Rehabilitation of the Lavalette Dam in France

Haute-Loire, France – February 2026. For the comprehensive rehabilitation of the historic Barrage de Lavalette in the Haute-Loire department of southern France, the construction consortium led by the construction company Legendre Génie Civil is relying on a tailor-made solution from Wolffkran. A WOLFF 7534.16 Clear mounted on a City Portal has been in operation since March 2025 and plays a key role in this demanding infrastructure project, which is characterized by extremely confined space conditions.

The construction works on the dam include the complete replacement of three floodgates dating back to the 1950s, as well as the modernization of a fourth gate from the 1990s, all of which have suffered significant wear after decades of operation. With a hook height of 20.4 meters, a jib length of 40 meters, and a maximum lifting capacity of 16 tons, the WOLFF 7534.16 Clear is responsible for installing temporary structures as well as lifting out and installing the old and new gates.

“The dam crest is only 6.7 meters wide, which made crane erection and delivery logistics a demanding task for our team,” says Cécile Caron, Sales Director at Wolffkran. “Wind gusts exceeding 45 km/h further complicated the installation and extended the assembly time from the planned two days to around 3.5 days,” says Cécile Caron.

Portal Solution Keeps Traffic Moving

As a road runs across the dam and cannot be closed for the entire construction period, the WOLFF crane was installed on a WOLFF City Portal 520 (with a side length of 5.2 meters), allowing traffic to pass underneath. In a first step, 12-meter load distribution beams were installed using a mobile crane to distribute the crane loads evenly across the dam crest. As a second step, another 90-ton mobile crane erected both the City Portal and the flat top tower crane. In spite of the City Portal solution, the road is closed on weekdays between 9 am and 2 pm, as the crane is not permitted to slew loads over the active roadway for safety reasons. All lifting operations must therefore be carried out within this time frame.

WOLFFKRAN International AG
Božena Hloušek
Marketing & Event Manager
Group Marketing
Hinterbergstr. 17
CH-6330 Cham
T + 41 41 766 85 75
M + 41 78 918 94 94
b.hloušek@wolffkran.com
www.wolffkran.com

WOLFFKRAN GmbH
Dr.-Ing. Mohamed Abouelezz
Head of Business Development
Renntalstr. 20
D-74360 Ilsfeld
T +49 7062 999 95 25
M +49 171 2210 621
m.abouelezz@wolffkran.de
www.wolffkran.com

Press Contact
Sarah Spitzl-Kirch
PR-Manager
Rumfordstr. 5
D-80469 München
T + 49. 173 47 40 908
spitzl-kirch@headline-affairs.de
www.headline-affairs.de

PRESS RELEASE

One WOLFF for Everything

One particularly challenging phase of the project was the removal of the counterweight of one of the existing floodgates. The concrete block, weighing approximately 51 tons, could not be moved as a single unit, and was therefore split into sections on site. The individual segments, weighing up to 16 tons, were then removed using the WOLFF crane.

“Wolffkran was the only provider able to offer a complete solution consisting of the crane, portal structure, assembly and service under the given constraints” says François-Xavier Béthuel, Head of the Crane Division at Legendre Matériel. “The Wolffkran team was closely involved in site planning from an early stage and is also responsible for operation, service, and maintenance throughout the approximately 24-month construction period, allowing us to source everything from a single provider.”

Crane specifications on this construction site:

WOLFF	Crane base	Jib radius, m	Hook height, m	max. lifting capacity/peak load capacity, t
7534.16 Clear	City Portal 520	40,0	20,4	16,0 / 8,9

WOLFFKRAN International AG
Božena Hloušek
Marketing & Event Manager
Group Marketing
Hinterbergstr. 17
CH-6330 Cham
T + 41 41 766 85 75
M + 41 78 918 94 94
b.hloušek@wolffkran.com
www.wolffkran.com

WOLFFKRAN GmbH
Dr.-Ing. Mohamed Abouelezz
Head of Business Development
Renntalstr. 20
D-74360 Ilsfeld
T +49 7062 999 95 25
M +49 171 2210 621
m.abouelezz@wolffkran.de
www.wolffkran.com

Press Contact
Sarah Spitzl-Kirch
PR-Manager
Rumfordstr. 5
D-80469 München
T + 49. 173 47 40 908
spitzl-kirch@headline-affairs.de
www.headline-affairs.de

WOLFFKRAN is a leading manufacturer of premium quality tower cranes with a tradition spanning over 170 years. With its own rental fleet of around 800 tower cranes it is also one of the largest crane rental businesses in the world. WOLFFKRAN is headquartered in Zug, Switzerland and has manufacturing sites in Heilbronn and Luckau, Germany. It currently employs a global workforce of approx. 870 people in its two manufacturing sites and its sales and service subsidiaries located across Western and Central Europe, the Middle East and the United States.

PRESS RELEASE – Pictures and captions

Image Source (please specify): © Lionel Ciochetto



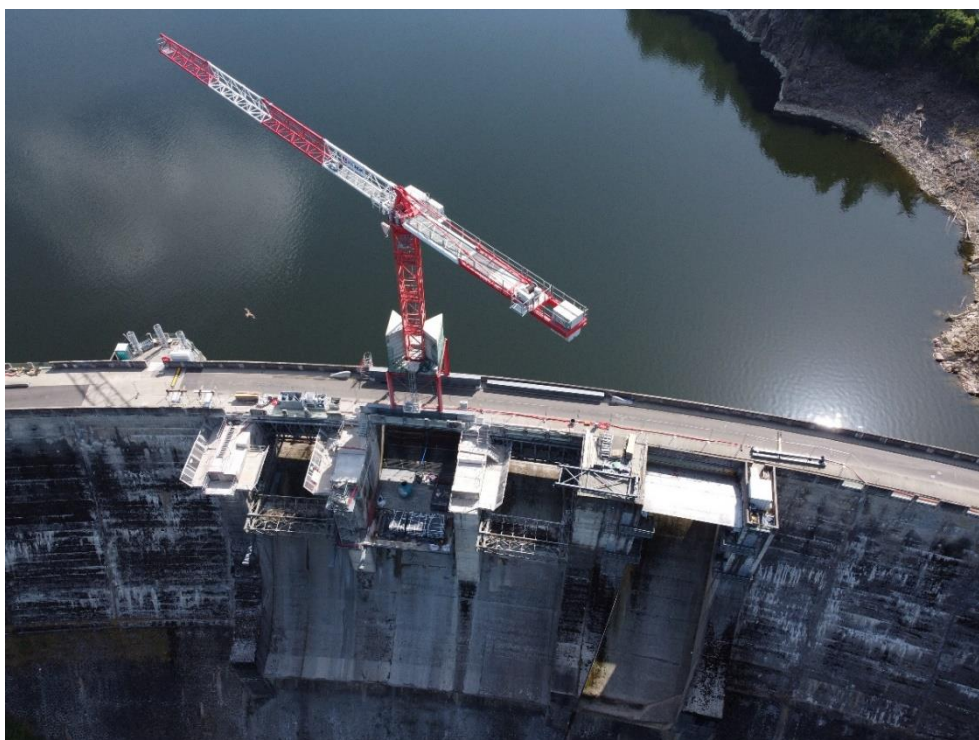
The WOLFF 7534.16 Clear, with a hook height of 20.4 meters, a jib length of 40.0 meters, and a load capacity of 16.0 tons, is replacing the flood gates at the Barrage de Lavalette dam in south-eastern France.



PRESS RELEASE – Pictures and captions



A WOLFF can cope with even limited space: Wolffkran supplied a complete package comprising a crane, gantry solution, service, maintenance, and crane operation for the renovation of the Lavalette Dam.



PRESS RELEASE – Pictures and captions



Thanks to the WOLFF City Portal, the road remains passable and only needs to be closed for a few hours each day.