

WOLFFKRAN is the perfect partner for wind turbine installation and maintenance

WOLFFKRAN's world leading tower crane expertise and innovation has developed a specific range of lifting services designed to meet all of the heavy lifting requirements for the erection and maintenance of wind turbines.

Our tower crane technology provides a more cost effective way to build and maintain wind turbines and is ideally suited to meet difficult and demanding build schedules, providing a smarter alternative to typical crawler crane utilisation.

Key reasons to choose a tower crane instead of traditional build and maintenance lifting methods.



Faster operating speeds

Quicker hook speeds ensure greater productivity



Greater stability and less down time

Fixed directly to the wind turbine foundations our cranes can work at wind speeds of up to 20 m/s



Cost benefits

Tower cranes provide a significantly cheaper alternative to other lift mechanisms

WOLFFKRAN

Working with you to identify and plan the right solution for your wind turbine installation.

WOLFFKRAN International AG
Hinterbergstrasse 17
6330 Cham
Switzerland
Phone +41 41 766 85 75
windsolution@wolffkran.com

www.wolffkran.com

WOLFFKRAN

**Faster, smarter,
more cost-effective
wind turbine
installation and
maintenance**

Better ways to build wind farms

Bigger wind turbines demand intelligent new ways of thinking

With the demand for energy alternatives to combat global warming growing, and the need to reduce the impact on the environment via other sustainable methods, WOLFFKRAN has designed and created a dedicated range of tower cranes. These cranes provide real alternatives to land-based lifting products to build wind turbine farms economically, quickly, and safely to meet the needs of an energy hungry world.

WOLFF Tower Cranes for wind turbine installation



Lifting capacity of 125 tonnes up to a radius of 12.5 meters



Hook height of up to 185 meters or more on freestanding tower



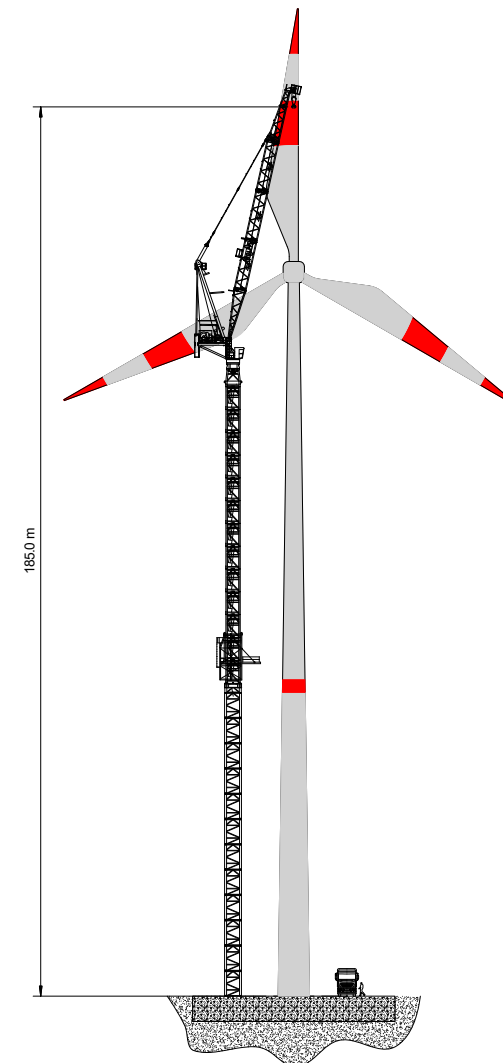
Tower climbing speed of 9 meters/hour at wind speeds up to 15 m/s



Small footprint using a cross frame or foundation anchors



Specifications and technical information



Our latest wind turbine adapted luffing jib cranes provide exceptional performance and are optimised to suit the build and maintenance of wind farms.

WOLFF 700 B Wind

- Lifting Capacity: **95 tonnes at 10 meters**
- Jib Length: **50 meters**
- Hook Height: **Up to 185 meters or higher** (free standing)

WOLFF 1250 B Wind

- Lifting Capacity: **125 tonnes at 12.5 meters**
- Jib Length: **50 meters**
- Hook Height: **Up to 185 meters or higher** (free standing)



Elevated driver position and **WOLFF Fine Positioning** controls allow for the exact placement of heavy loads



WOLFF tower cranes arrive using **standard road transport** and offer significantly less environmental impact