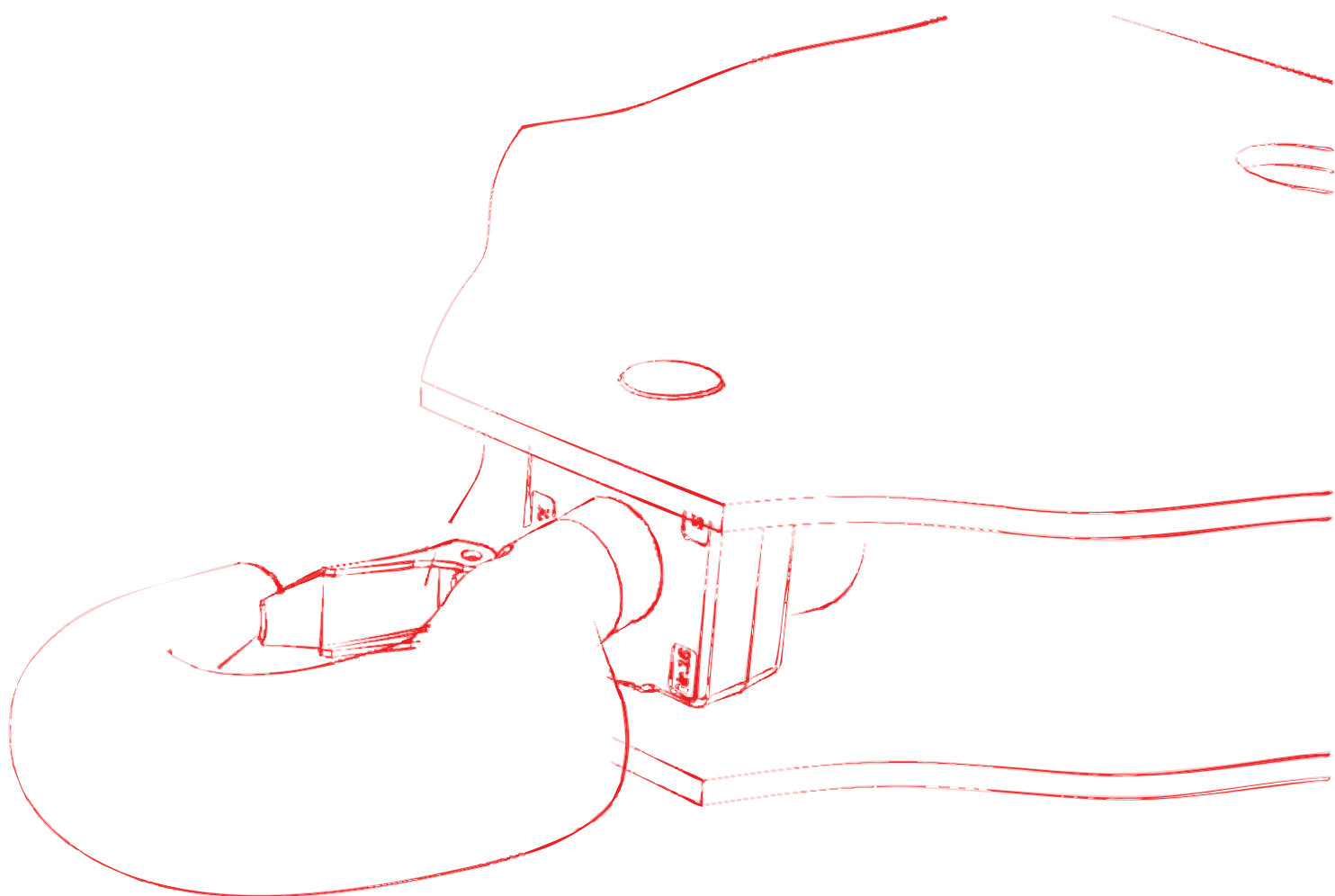


## Technical Information

### System component

### WOLFF Mobile Cross Frame



**Original operating manual**

German

English



*Published by*

**WOLFFKRAN GmbH**

Austraße 72

74076 Heilbronn

Germany

Phone +49 7131 9815 0

Fax +49 7131 9815 355

[www.wolffkran.com](http://www.wolffkran.com)

[info@wolffkran.de](mailto:info@wolffkran.de)

### Copyright

This documentation including all of its subsections is protected by copyright laws.

Any type of use or modification outside of the stringent limits of the copyright laws without permission of WOLFFKRAN GmbH is prohibited and subject to penalties.

This applies particularly for copying, translation, microfilming and storage and processing in electronic systems.

At the time of printing, the information, data, illustrations and notes comprised in this manual were up-to-date.

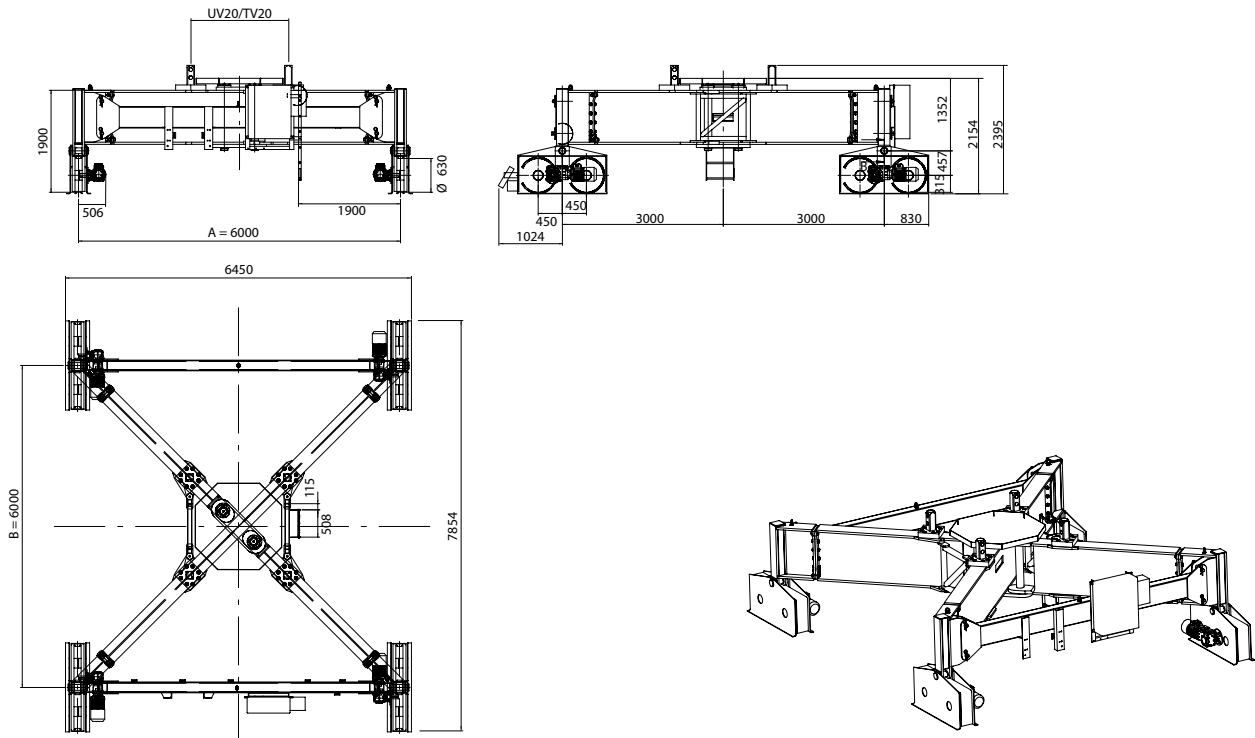
Subject to change of design, error and typos.

## Table of contents

|   |              |
|---|--------------|
| <b>1 Mobile cross frame KRF 10-46/60 .....</b>  | <b>1 / 1</b> |
| <b>2 Mobile cross frame KRF4 12-60/80 .....</b> | <b>2 / 1</b> |
| <b>3 Mobile cross frame KRF6 12-60/80 .....</b> | <b>3 / 1</b> |
| <b>4 Mobile cross frame KRF 16-80/100 .....</b> | <b>4 / 1</b> |

**This page was intentionally left blank!**

## 1 Mobile cross frame KRF 10-46/60



|  |                    |
|--|--------------------|
| Rail gauge A   | 6.00 m             |
| Wheelbase B  | 6.00 m             |
| Rail profile   | S 64 (DIN 5902)    |
| Crane traversing speed   | 30 m/min           |
| Accumulated motor power  | 22 kW (4 x 5.5 kW) |
| Total weight<br>KRF 10-46/60<br>, with bolted spigots AZ 140 M,<br>without tower element and rope drum | 17500 kg           |

The KRF 10-46/60 mobile cross frame is used as an independent module within the WOLFF slewing tower crane system.

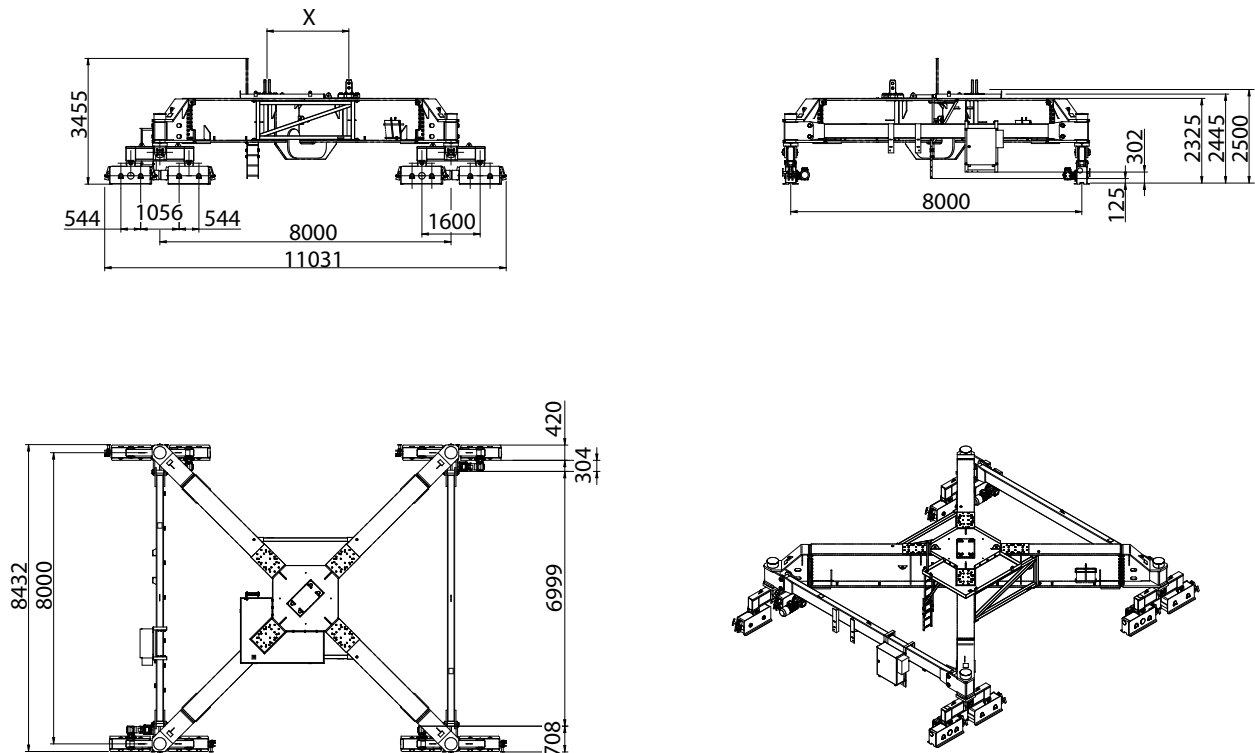
The KRF 10-46/60 mobile cross frame is used to move the slewing tower crane.

For information pertaining to application options, refer to the manual of the corresponding WOLFF slewing tower crane (tower combination, central ballast block / corner load tables).

**This page was intentionally left blank!**

## 2 Mobile cross frame KRF4 12-60/80

### Mobile cross frame, KRF4 12-60/80



|   |                    |
|---|--------------------|
| Rail gauge  | 8.00 m             |
| Wheelbase   | 8.00 m             |
| Rail profile  | S 49 (DIN 5902)    |
| Crane traversing speed  | 25 m/min           |
| Accumulated motor power   | 22 kW (4 x 5,5 kW) |
| Total weight KRF 4 12-60/80 , without bolted spigots, without tower element and rope drum | 32.30 t            |

The KRF 4 12-60/80 mobile cross frame is used as an independent module within the WOLFF slewing tower crane system.

The KRF 4 12-60/80 mobile cross frame is used to move the slewing tower crane.

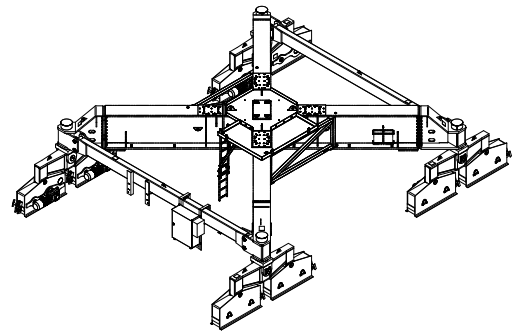
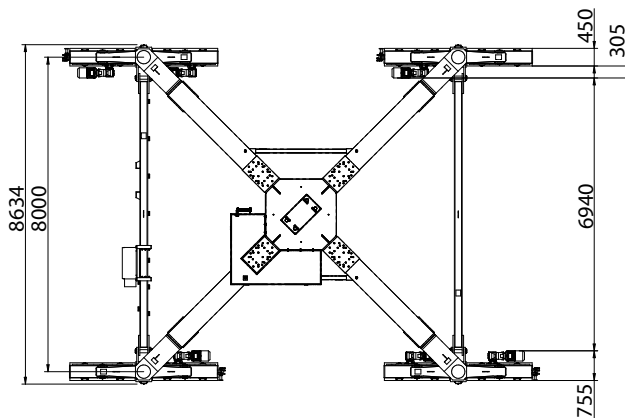
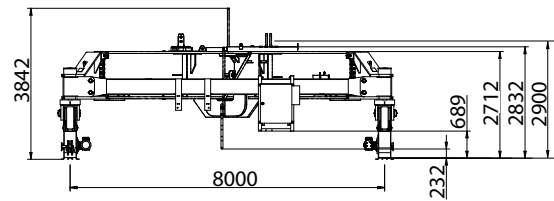
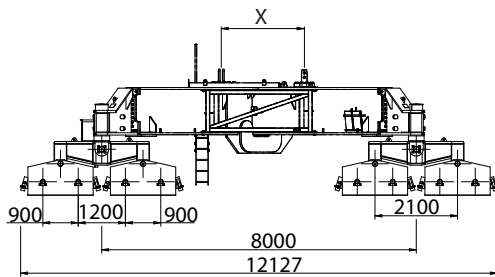
For information pertaining to application options, refer to the manual of the corresponding WOLFF slewing tower crane (tower combination, central ballast block / corner load tables).

**This page was intentionally left blank!**



## 3 Mobile cross frame KRF6 12-60/80

### Mobile cross frame, KRF6 12-60/80



|   |                    |
|---|--------------------|
| Rail gauge  | 8.00 m             |
| Wheelbase   | 8.00 m             |
| Rail profile  | S 64 (DIN 5902)    |
| Crane traversing speed  | 30 m/min           |
| Accumulated motor power   | 33 kW (6 x 5.5 kW) |
| Total weight KRF 6 12-60/80 , without bolted spigots, without tower element and rope drum | 41.20 t            |

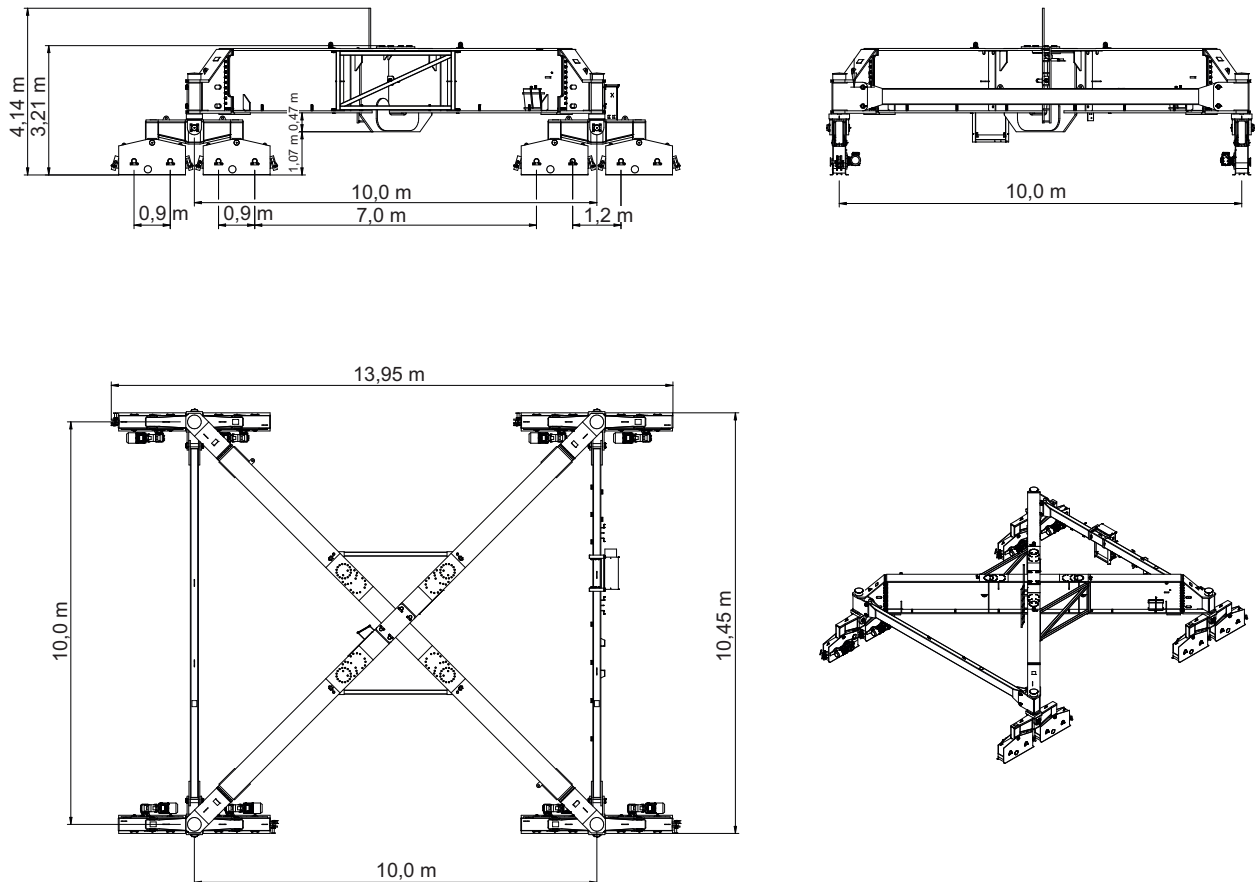
The KRF 6 12-60/80 mobile cross frame is used as an independent module within the WOLFF slewing tower crane system.

The KRF 6 12-60/80 mobile cross frame is used to move the slewing tower crane.

For information pertaining to application options, refer to the manual of the corresponding WOLFF slewing tower crane (tower combination, central ballast block / corner load tables).

**This page was intentionally left blank!**

## 4 Mobile cross frame KRF 16-80/100



|  |                    |
|--|--------------------|
| Rail gauge   | 10.00 m            |
| Wheelbase  | 10.00 m            |
| Rail profile   | S 64 (DIN 5902)    |
| Crane traversing speed   | 30 m/min           |
| Accumulated motor power  | 44 kW (8 x 5.5 kW) |
| Total weight KRF 16-80/100 , without bolted spigots, without tower element and without rope drum | 49.60 t            |

The KRF 16-80/100 mobile cross frame is used as an independent module within the WOLFF slewing tower crane system.

The KRF 16-80/100 mobile cross frame is used to move the slewing tower crane.

For information pertaining to application options, refer to the manual of the corresponding WOLFF slewing tower crane (tower combination, central ballast block / corner load tables).

**This page was intentionally left blank!**

**This page was intentionally left blank!**

## **WOLFFKRAN Group**

*Headquarter international:*

### **WOLFFKRAN AG**

Hinterbergstrasse 17

CH-6330 Cham

Switzerland

Phone +41 41 766 85 00

Fax +41 41 766 85 99

[info@wolffkran.com](mailto:info@wolffkran.com)

*Manufacturing:*

### **WOLFFKRAN GmbH**

Austraße 72

D-74076 Heilbronn

Germany

Phone + 49 7131 9815 0

Fax + 49 7131 9815 355

[info@wolffkran.de](mailto:info@wolffkran.de)

### **WOLFFKRAN Werk Brandenburg GmbH**

Frederik-Ipsen-Straße 5

D-15926 Luckau OT Alverno

Germany

Phone + 49 35456 674 0

Fax + 49 35456 674 200

[info@wolffkran.de](mailto:info@wolffkran.de)