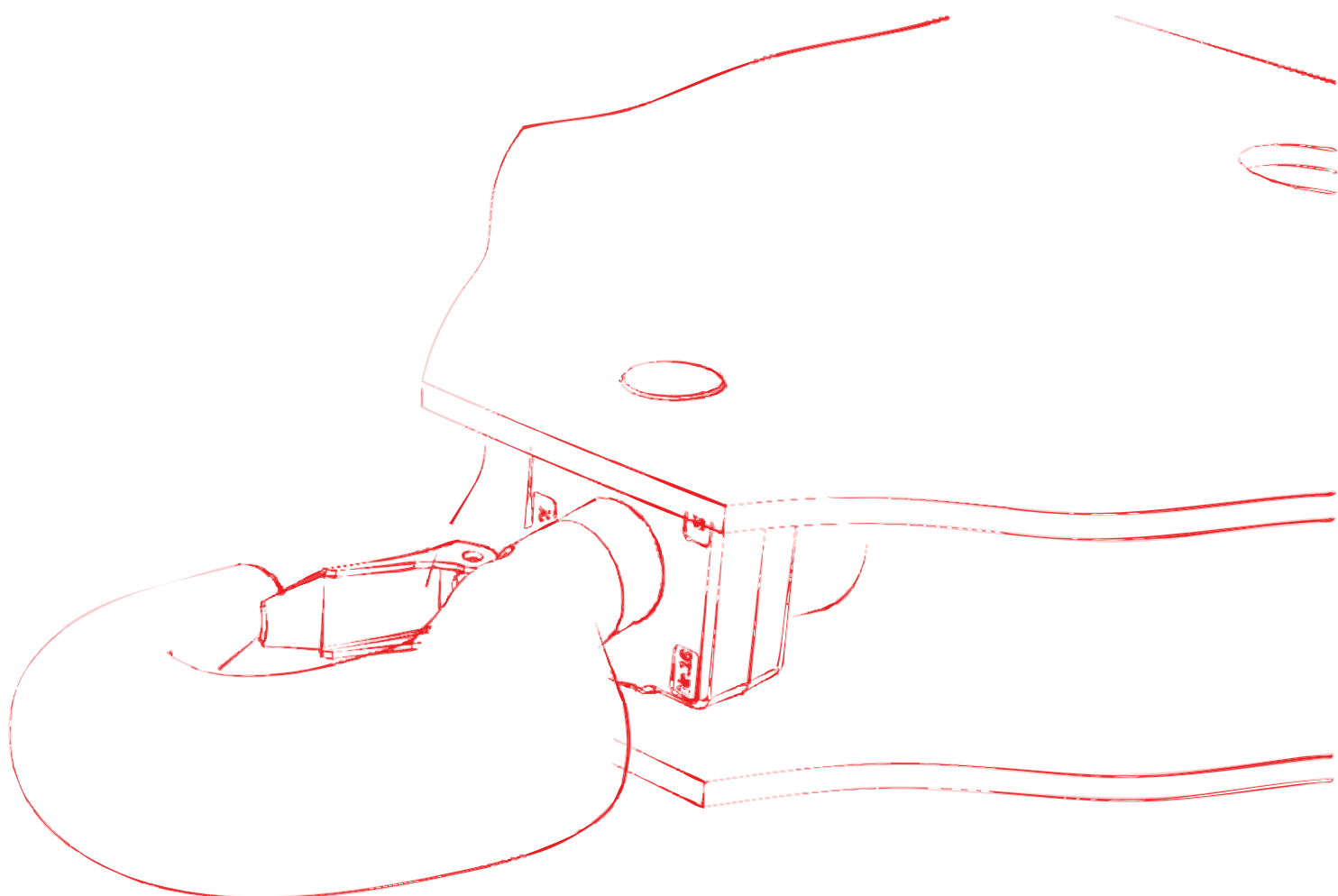


## Technical Information

### System component

### WOLFF Foundation Anchor



Original operating manual

German

English



*Published by*

**WOLFFKRAN GmbH**

Austraße 72

74076 Heilbronn

Germany

Phone +49 7131 9815 0

Fax +49 7131 9815 355

[www.wolffkran.com](http://www.wolffkran.com)

[info@wolffkran.de](mailto:info@wolffkran.de)

### Copyright

This documentation including all of its subsections is protected by copyright laws.

Any type of use or modification outside of the stringent limits of the copyright laws without permission of WOLFFKRAN GmbH is prohibited and subject to penalties.

This applies particularly for copying, translation, microfilming and storage and processing in electronic systems.

At the time of printing, the information, data, illustrations and notes comprised in this manual were up-to-date.

Subject to change of design, error and typos.

## Table of contents

1 FUA A .....	1 / 1
2 FUA B.4 .....	2 / 1
3 FUA C .....	3 / 1
4 FUA D .....	4 / 1
5 FUA F .....	5 / 1
6 FUA F/S .....	6 / 1
7 FUA G 33-1500 .....	7 / 1
8 FUA G 33-2000 .....	8 / 1
9 FUA 85 .....	9 / 1
10 FUA 93 .....	10 / 1
11 FUA 120 .....	11 / 1
12 FUA 140 .....	12 / 1
13 FUA 156 .....	13 / 1
14 FUA 156 S .....	14 / 1
15 FUA 160 .....	15 / 1
16 FUA 210 .....	16 / 1
17 FUA UV 29 .....	17 / 1
18 FUA BT 29 .....	18 / 1
19 Technical data foundation anchor for TV 60 .....	19 / 1

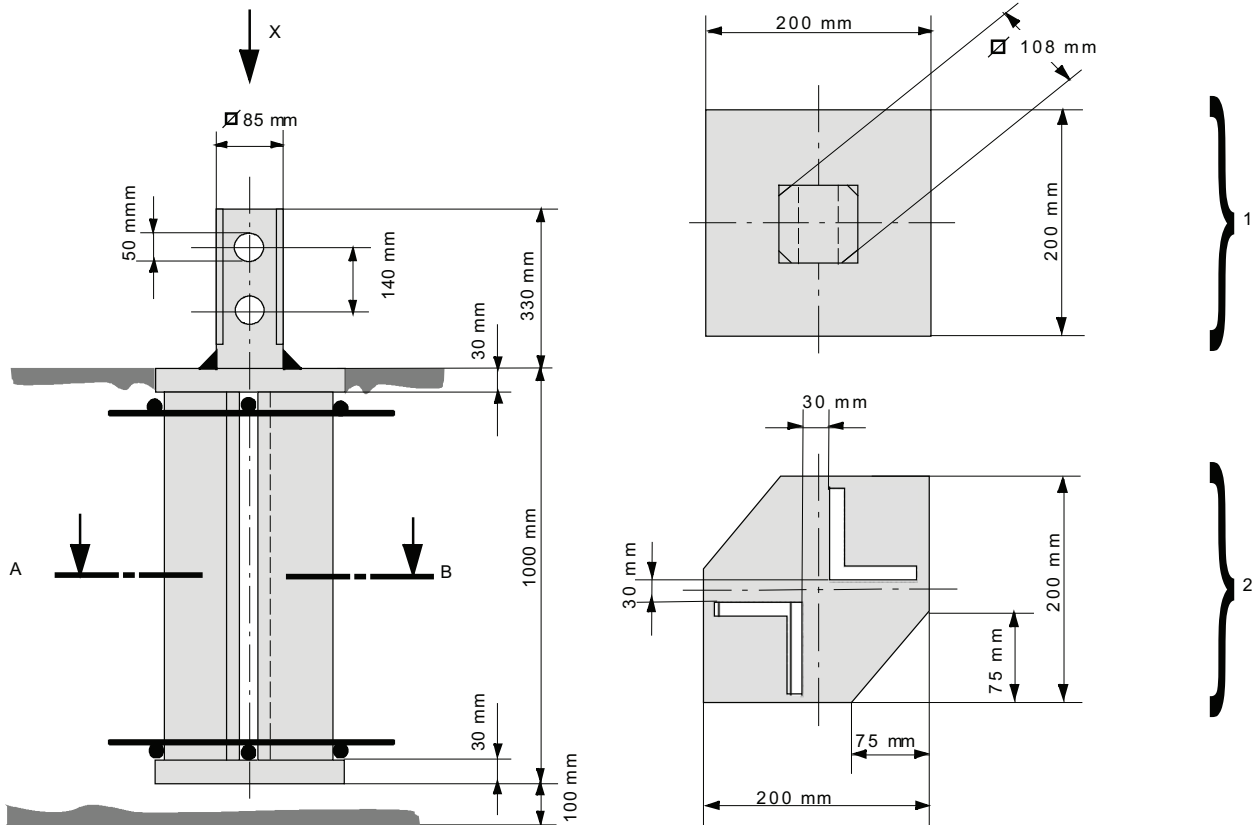
**This page was intentionally left blank!**

## 1 FUA A

- Spigots, 85 mm
- Tower element

TSL 15	
--------	--

- Weight per item = 53 kg



1	View X
2	Section A-B

**This page was intentionally left blank!**

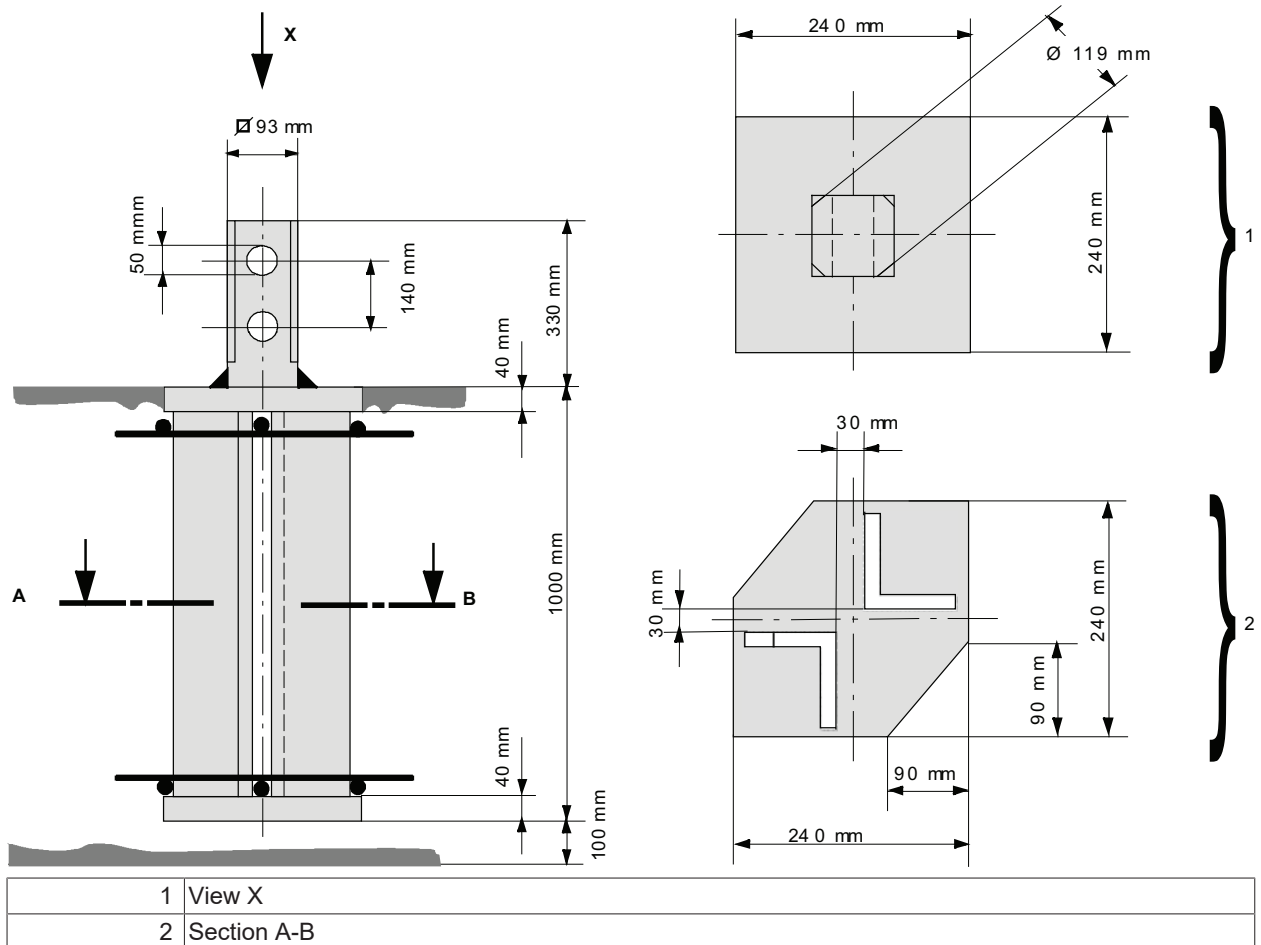
## 2 FUA B.4

Spigots, 93 mm

- Tower element

TFS 12	TFS 15
TFS 12 LC	TS 15
TFSÜ 12	TFS 20
TFSA 15	TS 20

- Weight per item = 87 kg



**This page was intentionally left blank!**

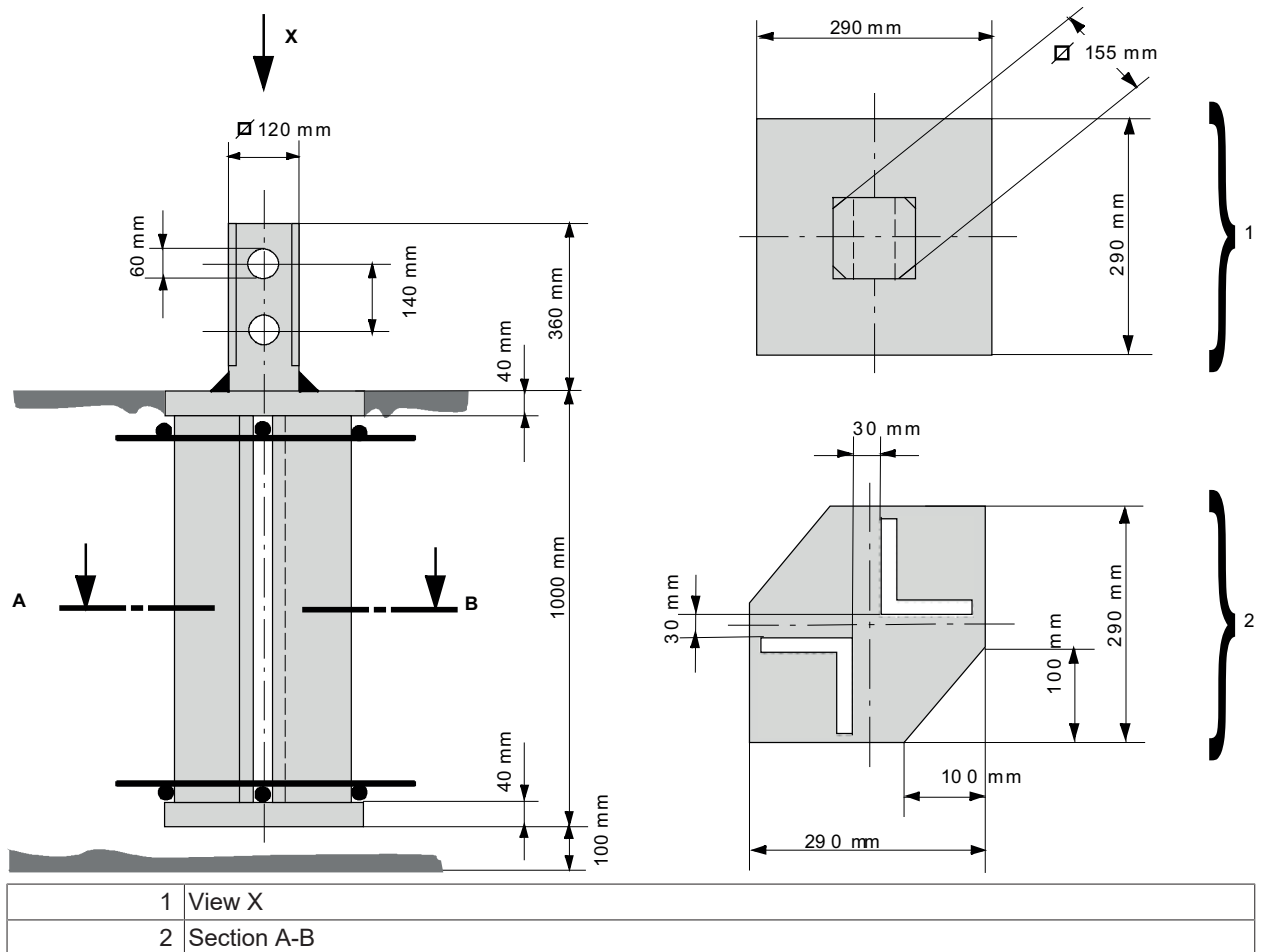


## 3 FUA C

- Spigots, 120 mm
- Tower element
- Inner climbing device

UVA 15	UVA 20
UV 15	UV 20
UVÜ 15	UTA 20
UTA 15	UT 20
UT 15	KSH 15
UTÜ 15	KSH 20 M

- Weight per item = 124 kg



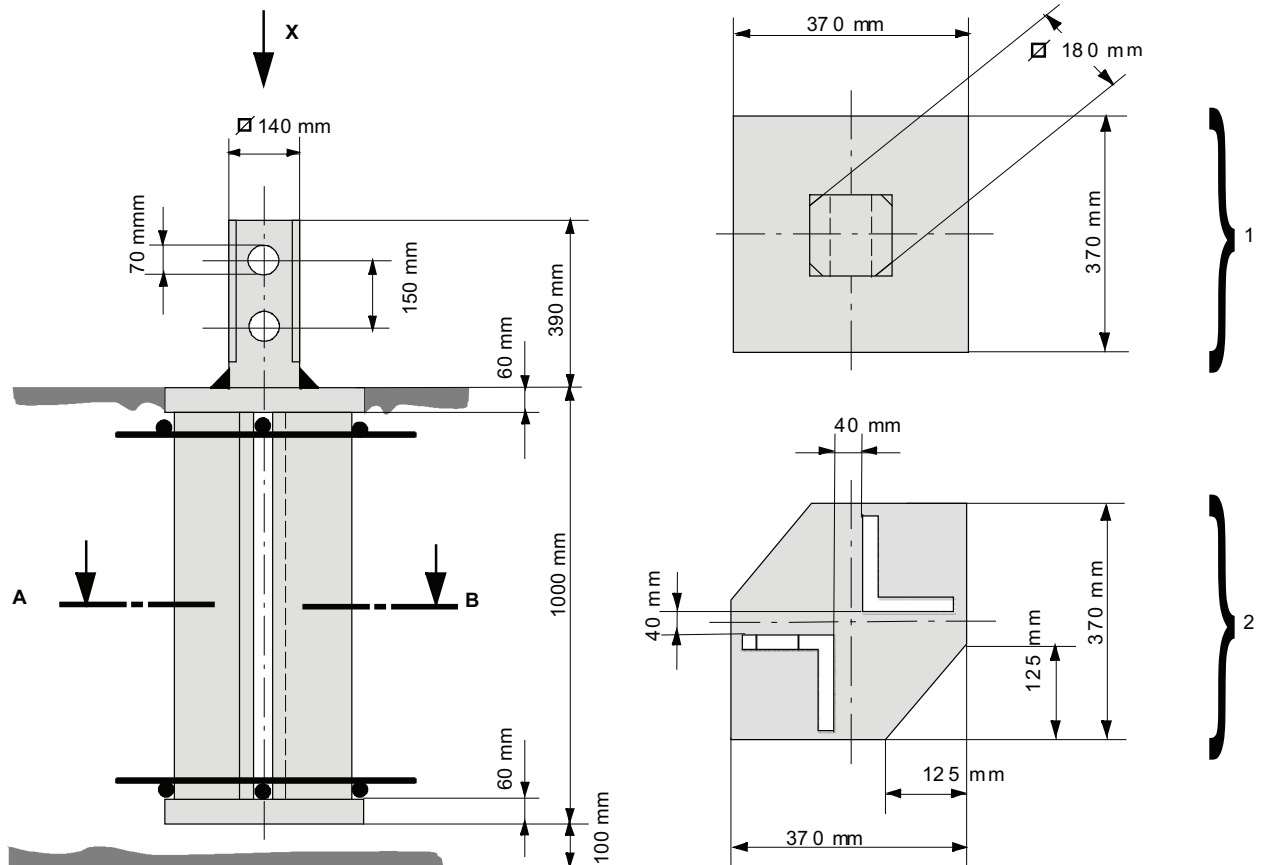
**This page was intentionally left blank!**

## 4 FUA D

- Spigots, 140 mm
- Tower element
- Inner climbing device

TVA 15	TVÜ 20
TV 15	TV 23
TVA 20	TV 25
TV 20	KSH 20H

- Weight per item = 251 kg



1	View X
2	Section A-B

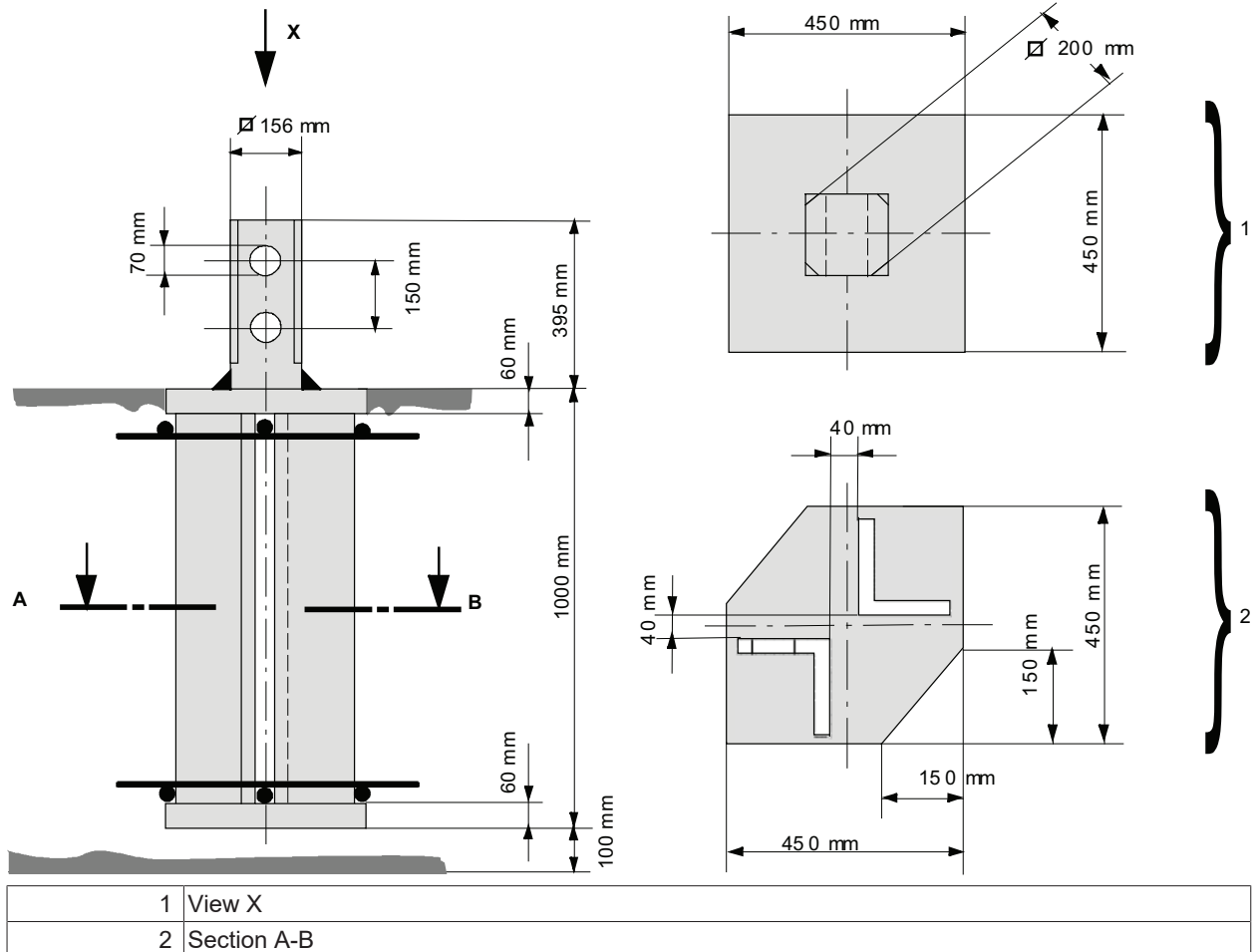
**This page was intentionally left blank!**

## 5 FUA F

- Spigots, 156 mm
- Tower element

UVA 25	UTA 25
UV 25	UT 25

- Weight per item = 360 kg



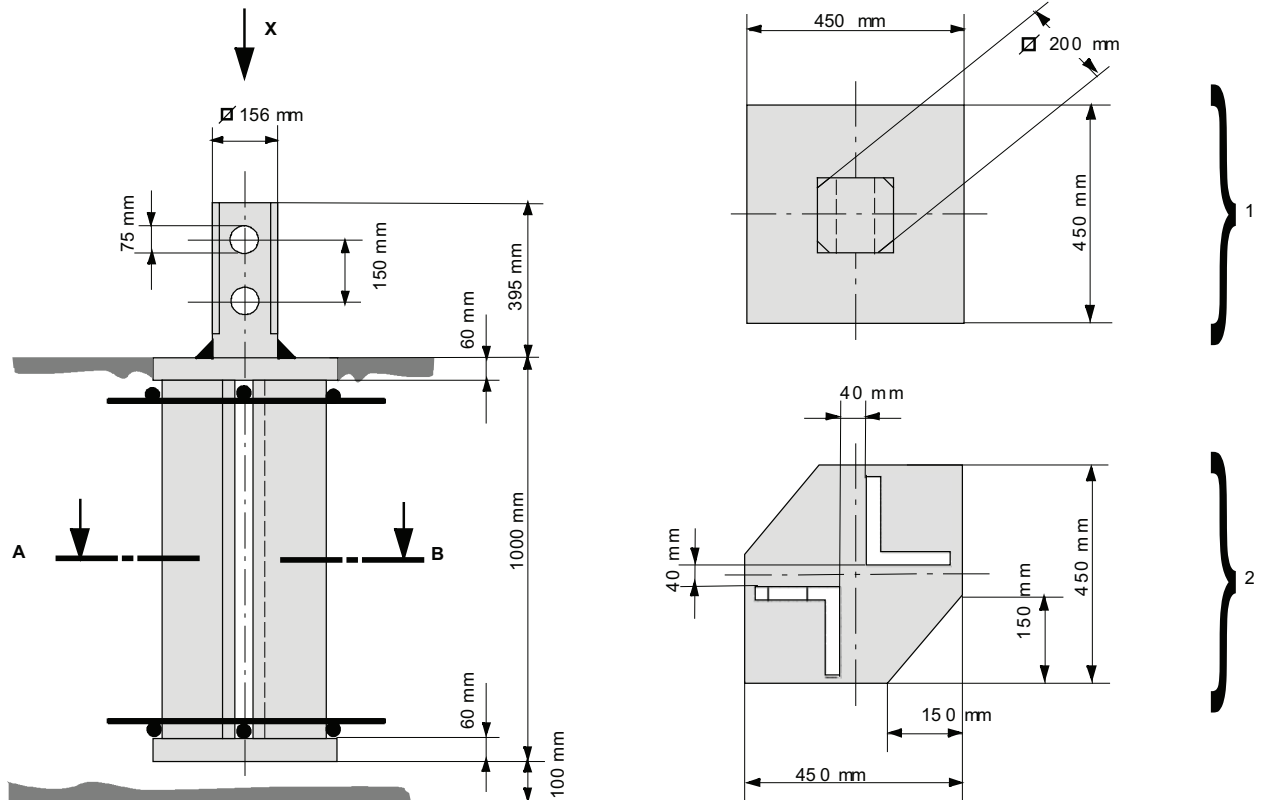
**This page was intentionally left blank!**

## 6 FUA F/S

- Spigots, 156 mm
- Tower element
- Inner climbing device

UV 25 S	KSH 20 SH
---------	-----------

- Weight per item = 360 kg



1	View X
2	Section A-B

**This page was intentionally left blank!**

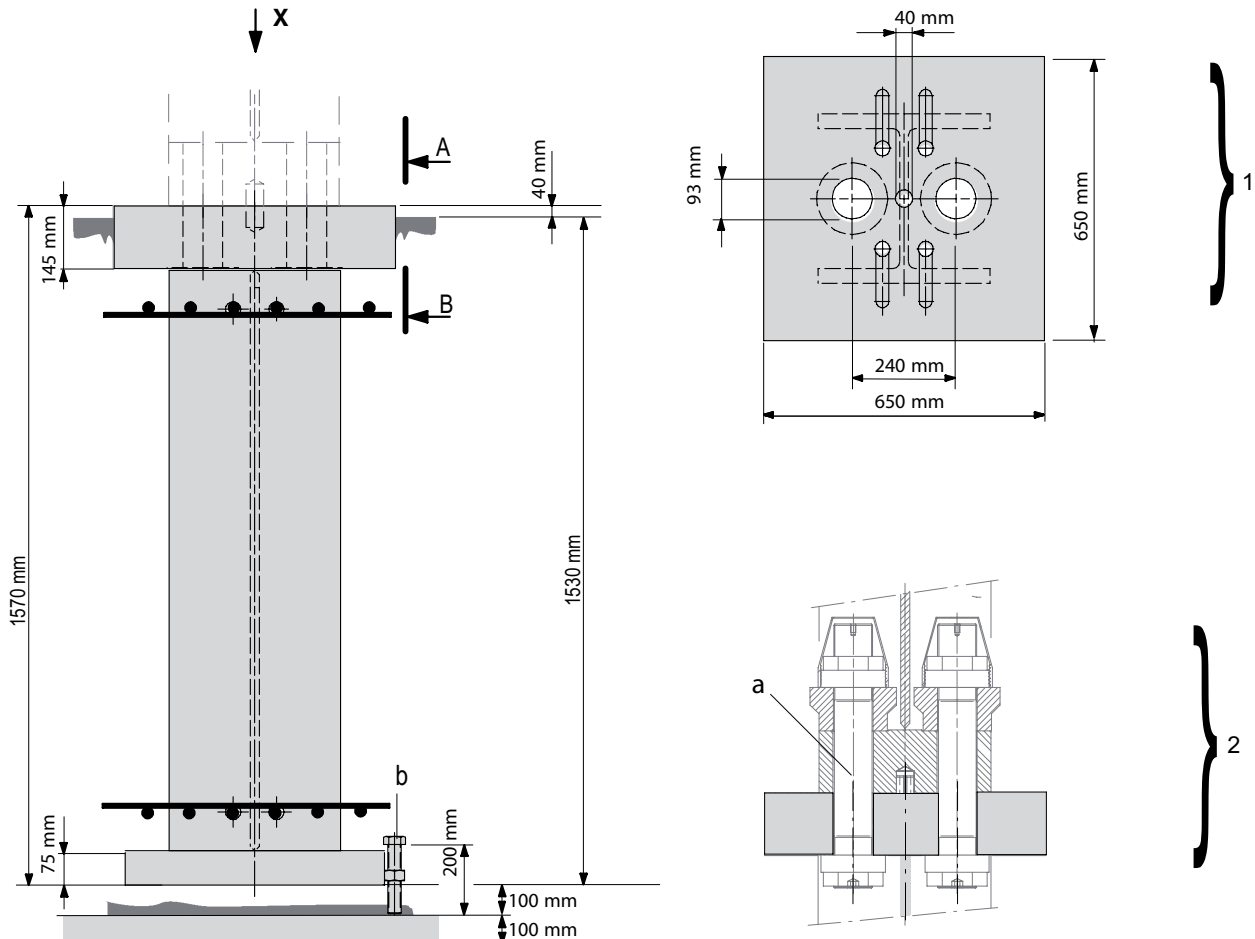


## 7 FUA G 33-1500

- Tower element

TV 33	TV 33-5
TV 33 L	TV 33-10

- Weight per item = 1060 kg



1	View X	2	Section A-B
a	Prestressing force M90 – 10.9 = 4000 kN	b	Setscrew M30 x 200-8.8 ISO 4017

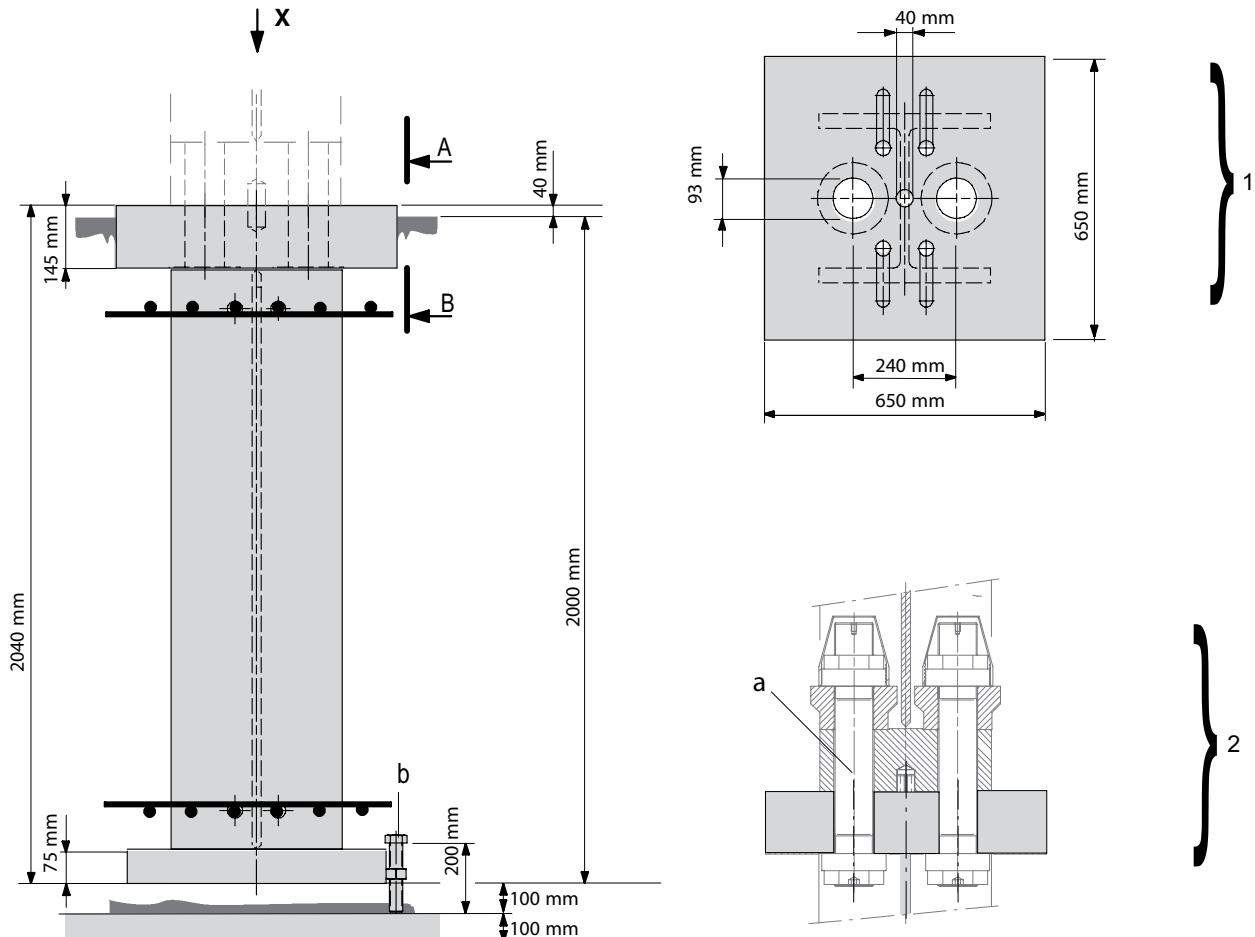
**This page was intentionally left blank!**

## 8 FUA G 33-2000

- Tower element

TV 33	TV 33-5
TV 33 L	TV 33-10

- Weight per item = 1165 kg



1	View X	2	Section A-B
a	Prestressing force M90 – 10.9 = 4000 kN	b	Setscrew M30 x 200-8.8 ISO 4017

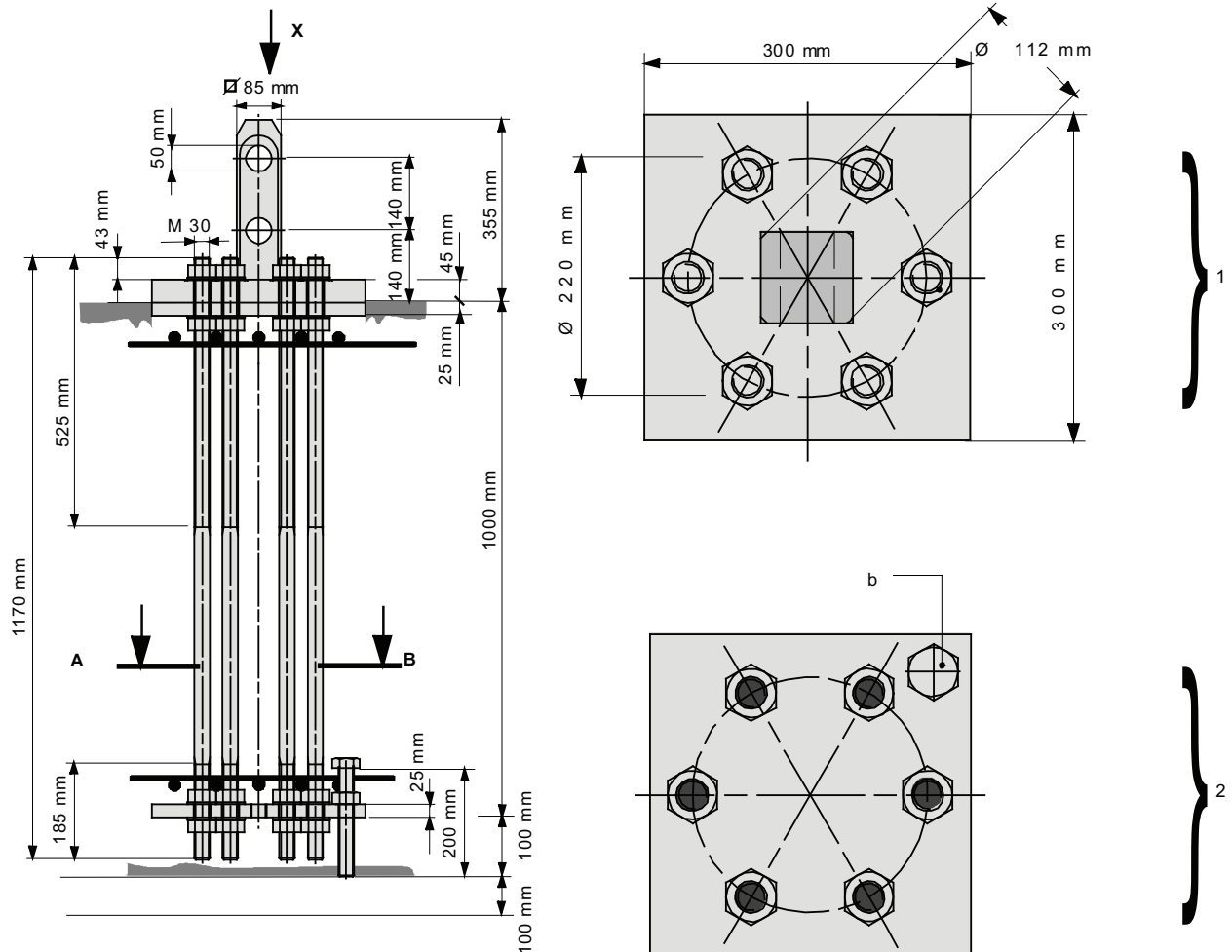
**This page was intentionally left blank!**

## 9 FUA 85

- Spigots, 85 mm
- Tower element

TSL 15	
--------	--

- Weight per item = 134 kg



1	View X	2	Section A-B
a	Tightening torque M30 - 10.9 = 1650 Nm MoS <sub>2</sub>	b	Setscrew M30 x 200- 8.8

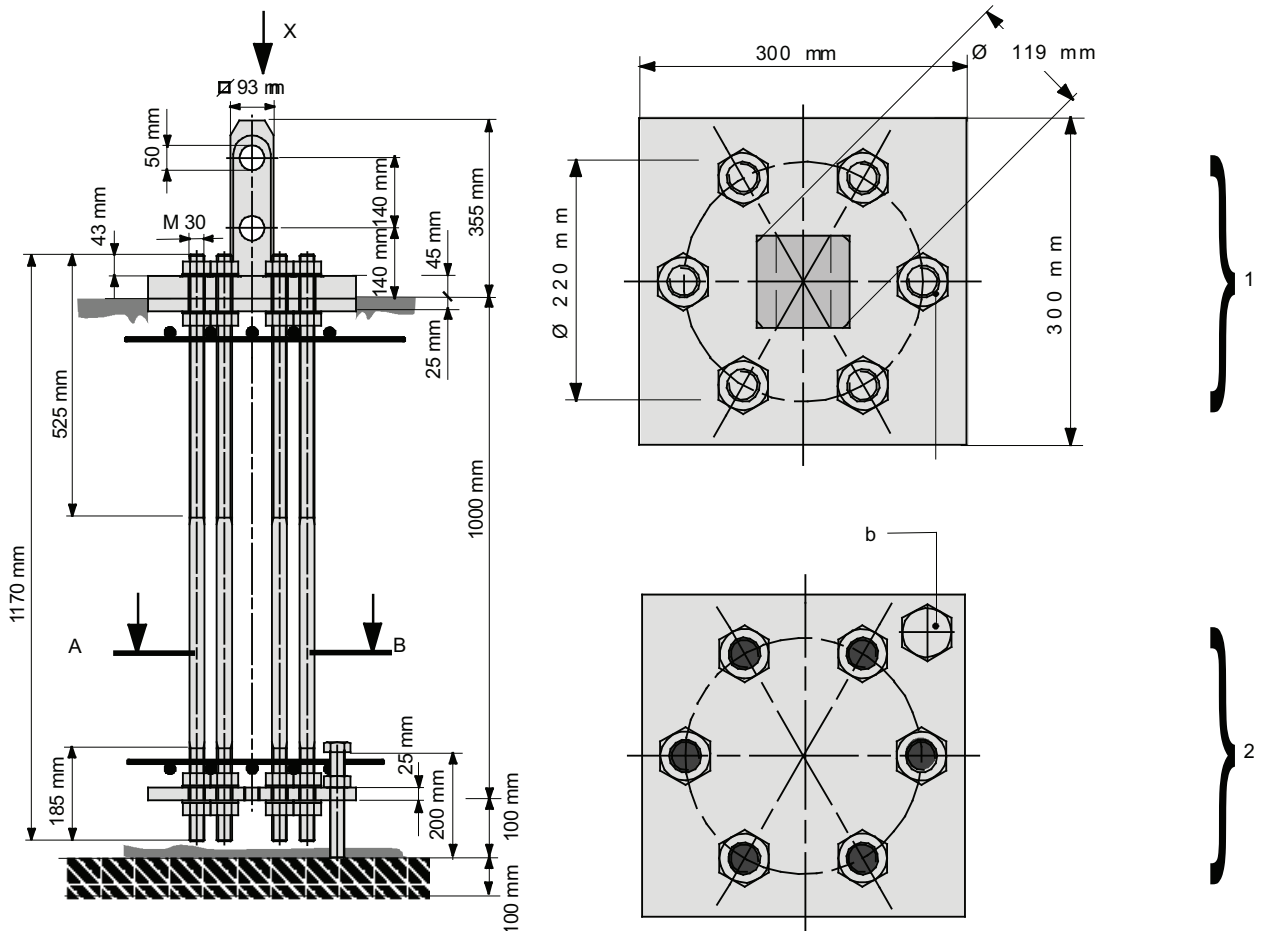
**This page was intentionally left blank!**

## 10 FUA 93

- Spigots, 93 mm
- Tower element

TFS 12	TFS 15
TFS 12 LC	TS 15
TFSÜ 12	TFS 20
TFSA 15	TS 20

- Weight per item = 137 kg



1	View X	2	Section A-B
a	Tightening torque M30 - 10.9 = 1650 Nm MoS <sub>2</sub>	b	Setscrew M30 x 200- 8.8

**This page was intentionally left blank!**





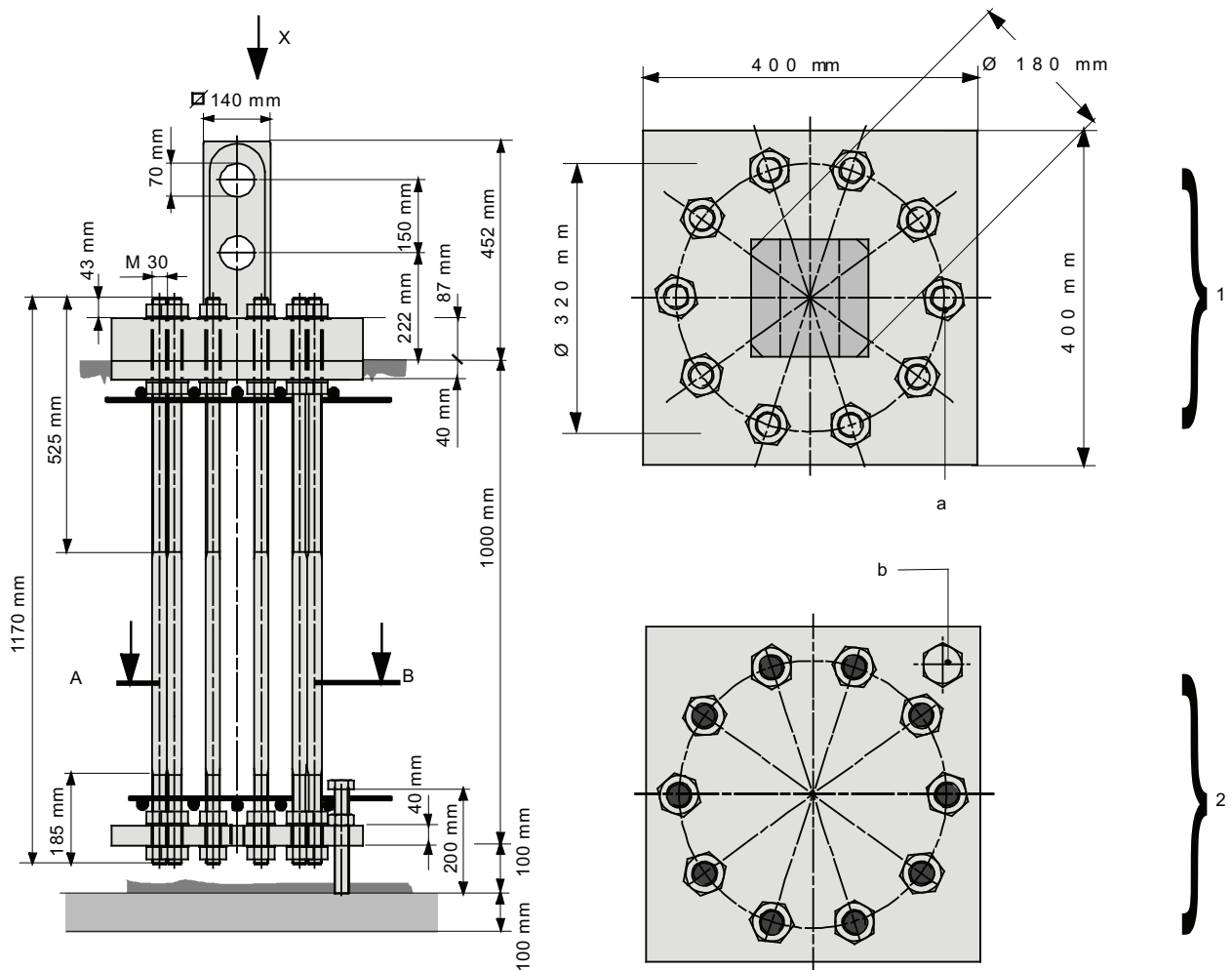
**This page was intentionally left blank!**

## 12 FUA 140

- Spigots, 140 mm
- Tower element
- Inner climbing device

TVA 15	TVÜ 20
TV 15	TV 23
TVA 20	TV 25
TV 20	KSH 20H

- Weight per item = 337 kg



1 View X	2 Section A-B
a Tightening torque M30 - 10.9 = 1650 Nm MoS <sub>2</sub>	b Setscrew M30 x 200- 8.8

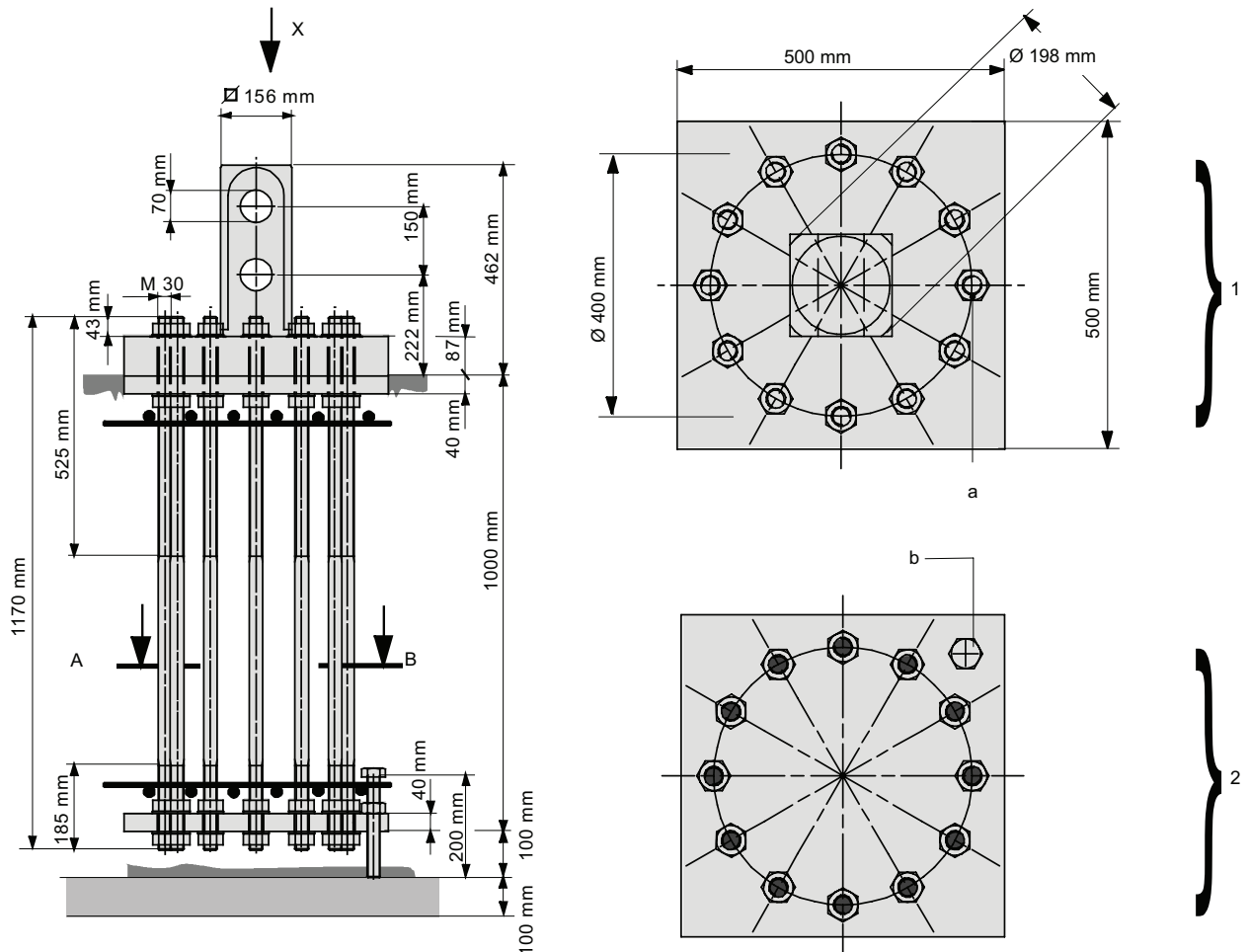
**This page was intentionally left blank!**

## 13 FUA 156

- Spigots, 156 mm
- Tower element

UVA 25	UTA 25
UV 25	UT 25

- Weight per item = 485 kg



1 View X	2 Section A-B
a Tightening torque M30 - 10.9 = 1650 Nm MoS <sub>2</sub>	b Setscrew M30 x 200- 8.8

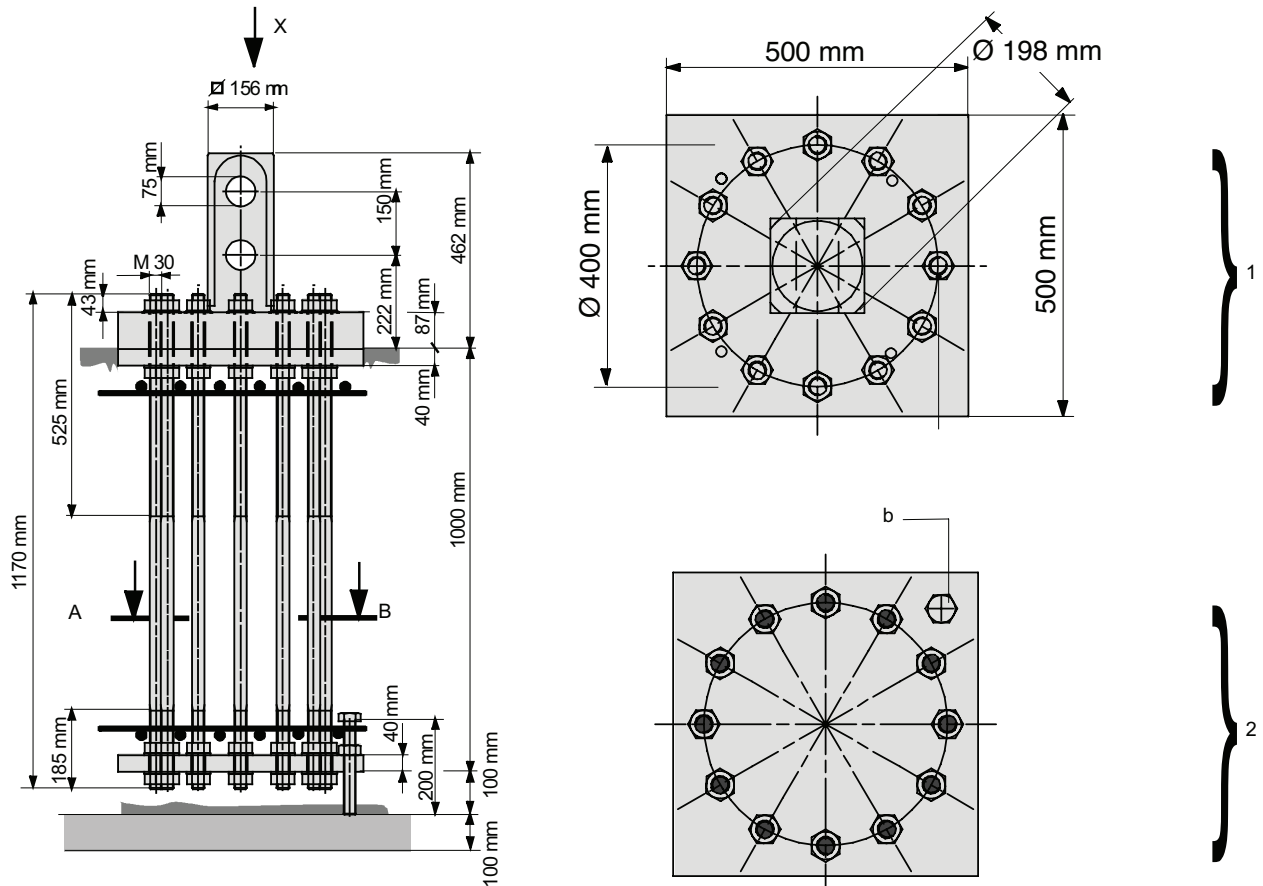
**This page was intentionally left blank!**

## 14 FUA 156 S

- Spigots, 156 mm
- Tower element
- Inner climbing device

UV 25 S	KSH 20 SH
---------	-----------

- Weight per item = 481 kg



1	View X	2	Section A-B
a	Tightening torque M30 - 10.9 = 1650 Nm MoS <sub>2</sub>	b	Setscrew M30 x 200- 8.8

**This page was intentionally left blank!**

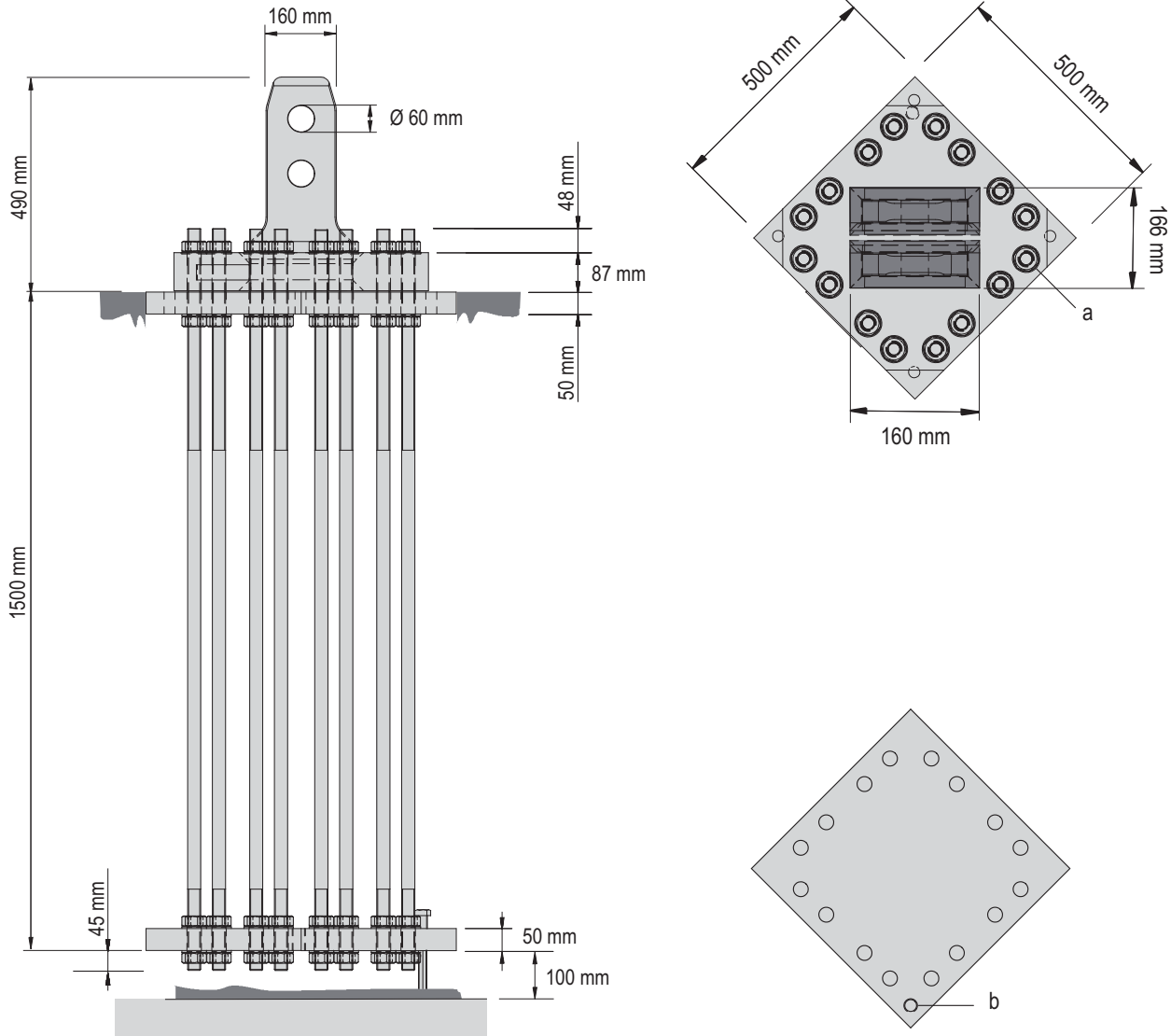


## 15 FUA 160

- Tower element

TVÜ 20-23	HT 23
HTA 23	

- Weight per item = 564 kg



a	Tightening torque M30 - 10.9 = 1650 Nm MoS <sub>2</sub>	b	Setscrew M30 x 200- 8.8
---	---	---	-------------------------

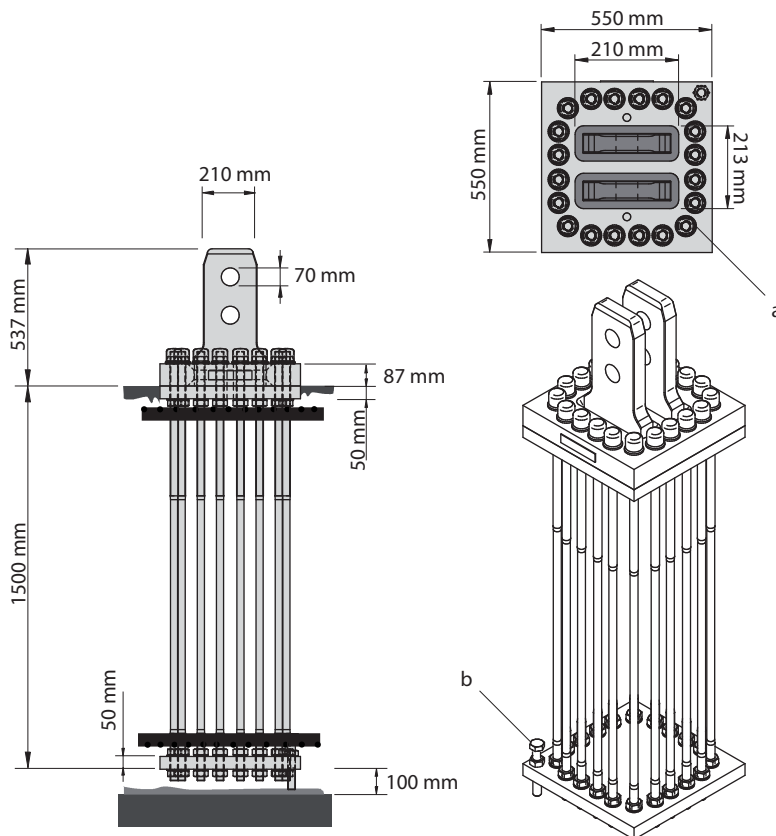
**This page was intentionally left blank!**

## 16 FUA 210

- Tower element
- Inner climbing device

BT 23	TV 29
BT 23 S	KSH 23
TVA 29	

- Weight per item = 705 kg



a	Tightening torque M30 - 10.9 = 1650 Nm MoS <sub>2</sub>	b	Setscrew M30 x 200- 8.8
---	---	---	-------------------------

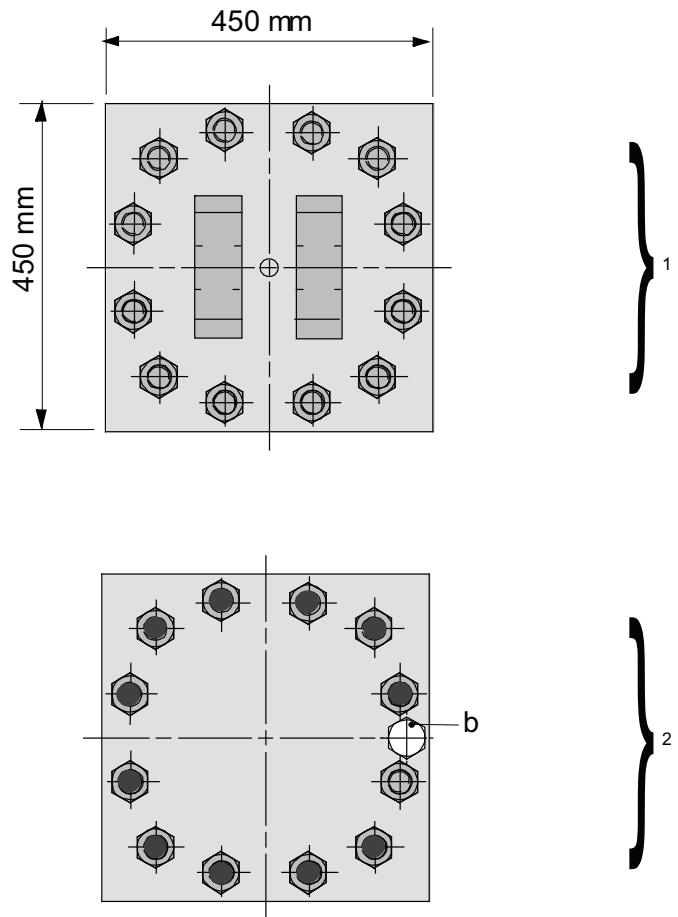
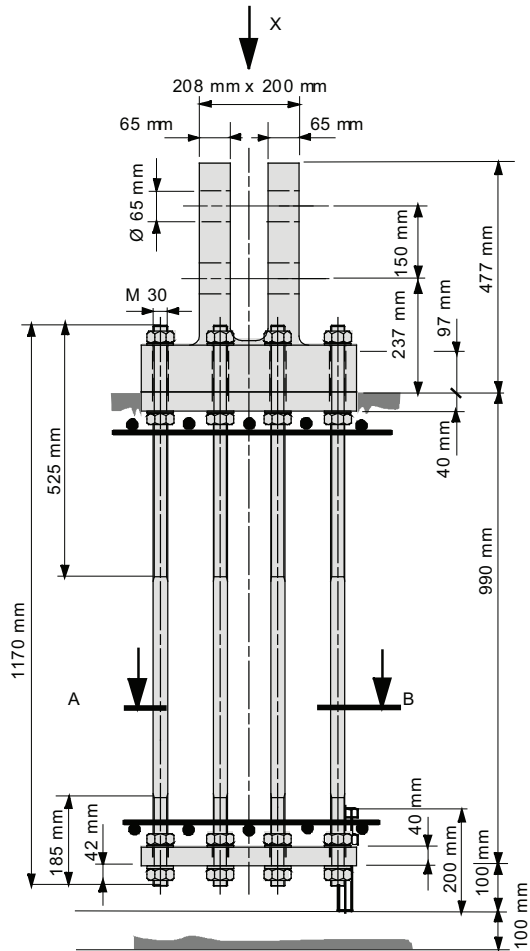
**This page was intentionally left blank!**

## 17 FUA UV 29

- Tower element

UV 29

- Weight per item = 452 kg



1	View X	2	Section A-B
a	Tightening torque M30 - 10.9 = 1650 Nm MoS <sub>2</sub>	b	Setscrew M30 x 200 -8.8

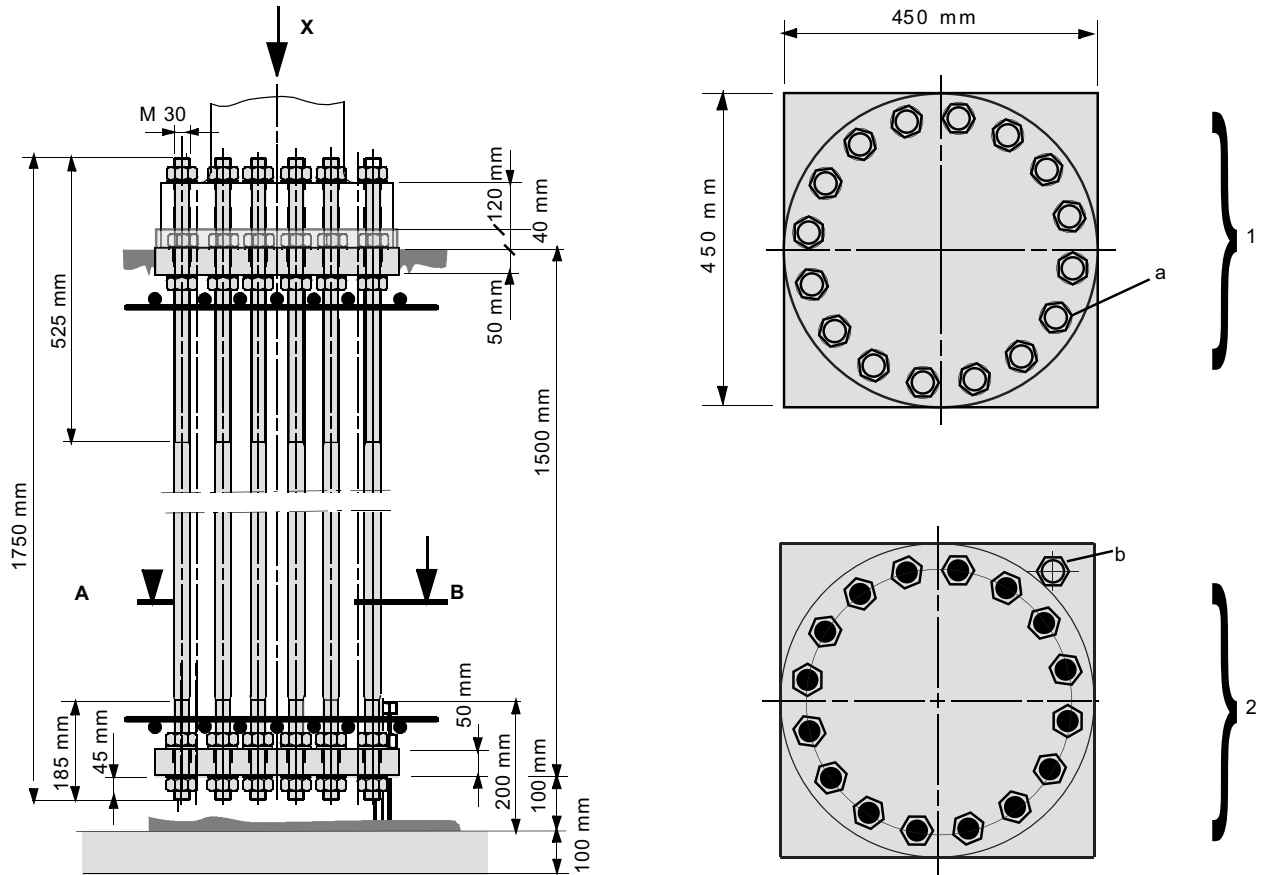
**This page was intentionally left blank!**

## 18 FUA BT 29

- Tower element

BT 29	
-------	--

- Weight per item = 327 kg

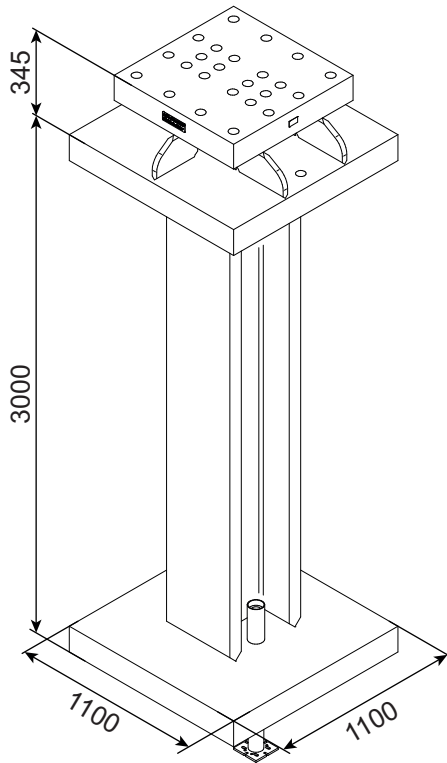


1 View X	2 Section A-B
a Tightening torque M30 - 10.9 = 1650 Nm MoS <sub>2</sub>	b Setscrew M30 x 200- 8.8

**This page was intentionally left blank!**



## 19 Technical data foundation anchor for TV 60



Weight	5360 kg
Adjustment range of spindle	100-490 mm

**This page was intentionally left blank!**

**This page was intentionally left blank!**

## **WOLFFKRAN Group**

*Headquarter international:*

### **WOLFFKRAN AG**

Hinterbergstrasse 17

CH-6330 Cham

Switzerland

Phone +41 41 766 85 00

Fax +41 41 766 85 99

[info@wolffkran.com](mailto:info@wolffkran.com)

*Manufacturing:*

### **WOLFFKRAN GmbH**

Austraße 72

D-74076 Heilbronn

Germany

Phone + 49 7131 9815 0

Fax + 49 7131 9815 355

[info@wolffkran.de](mailto:info@wolffkran.de)

### **WOLFFKRAN Werk Brandenburg GmbH**

Frederik-Ipsen-Straße 5

D-15926 Luckau OT Altno

Germany

Phone + 49 35456 674 0

Fax + 49 35456 674 200

[info@wolffkran.de](mailto:info@wolffkran.de)