



## Lighting Up Sheffield: WOLFFKRAN's Tower Crane Christmas Tradition

WOLFFKRAN's Tower Crane Christmas Light Switch-On lit up the Sheffield skyline and brought holiday cheer to the community. Towering beside the M1, the illuminated crane has become a cherished festive landmark.

The event brought together the WOLFFKRAN team and the wider Sheffield community, creating a memorable celebration. BBC Yorkshire captured the occasion, highlighting this shining tradition to a broader audience. You can catch their feature [here](#).

This beloved tradition is about so much more than twinkling lights. It's a celebration of togetherness, a chance to give back, and a way to usher in the season with gratitude and joy.

A heartfelt thank you to our valued customers for your continued trust and support, and to our dedicated employees for your hard work and commitment. As the lights shine brightly over Sheffield, we wish you and your loved ones a joyful and radiant holiday season!

## Newsletter Highlights

WOLFFKRAN Introduces Solar Energy at UK Base  
..... [page 2](#)

WOLFFKRAN at Vertikal Days 2024: A Successful Showcase  
..... [page 3](#)

Vita Load Navigator in action on the Chapter Living London Bridge project.. . . . . [page 4](#)

Celebrating WOLFFKRAN Employees' Achievements. . .  
..... [page 5](#)

Bauma 2025 – Here we go again!..... [page 6](#)



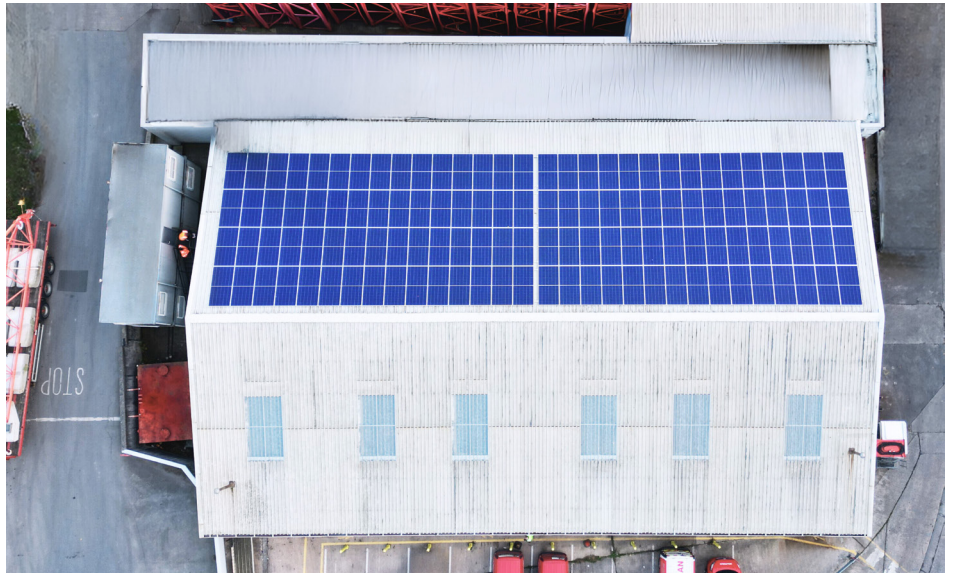
## WINTER UPDATE

Welcome to our final newsletter of the year. While challenging market conditions persist, we remain hopeful that the headlines in the media become reality and 2025 brings an upturn in the UK construction sector. As a business we have continued to work hard and are sincerely grateful for your business and continued trust in WOLFFKRAN throughout 2024.

Next year, we are excited to welcome more new tower cranes to our fleet and to launch a new luffing crane model, which we look forward to unveiling at the Bauma fair.

On behalf of everyone at WOLFFKRAN, we send you our warmest seasonal greetings and wish you all the very best for the new year.

Sales Director  
Adrian Hawkins



## WOLFFKRAN Introduces Solar Energy at UK Base

WOLFFKRAN Ltd is thrilled to announce the installation of a 70.8 kW solar system at our rental facility in Sheffield, developed in partnership with HDM Energy's "Energy for All" scheme. This upgrade covers up to 19% of our yard's electricity needs—peaking at 36% in July—and is projected to save us £20,000 annually while cutting CO2 emissions by 19 tons. This project brings us closer to our sustainability goals reduces reliance on grid electricity and ensures long-term financial savings and stability.

### Behind the Scenes: A Seamless Installation

With the teamwork of HDM Energy, installation experts from Voltaire, and our WOLFFKRAN staff, the project was completed smoothly within just two weeks, with no interruptions to our daily operations. Our facility now features 120 high-efficiency 590W solar panels, complemented by a SolaX inverter to maximize energy output efficiently and reliably.

*"I'm very excited about the impact our new solar system will have on our sustainability goals. By generating our power, we're reducing our CO2 footprint and building toward a greener future,"* commented Niall Conroy, WOLFFKRAN's Sustainability Program Manager.

### A Partner in Progress

WOLFFKRAN's transition to solar wouldn't have been possible without HDM Energy's "Energy for All" scheme, making solar power accessible to companies of all sizes without any capital expenditure. This PPA model enables businesses to benefit from solar energy at a fixed, low-cost rate, securing energy savings while supporting sustainability.





## WOLFFKRAN at Vertical Days 2024: A Successful Showcase

On September 11th and 12th, WOLFFKRAN took centre stage at Vertical Days 2024, hosted at the Newark Showground. Positioned at Stand 427, we showcased a lineup of innovative solutions that drew the attention of industry professionals, despite the temperamental weather. The event might have kicked off with grey skies and rain, but that didn't dampen the spirits of the WOLFFKRAN team. As the sun emerged on the second day, so did the crowds, eager to see the latest in crane technology and witness our products in action.



### Innovations on Display

One of the stars of the event was our Vita Load Navigator (VLN), with live demonstrations each day. Visitors gathered around as we showed off the VLN's advanced load stabilisation capabilities, attached to the WOLFF 6020's hook block. The VLN's precision and safety features impressed, catching the eye of potential customers who appreciated how this technology could transform their operations.

Also attracting significant attention was the WOLFF Hybrid Power Unit, an eco-friendly solution that reduces fuel consumption by up to 90%. At a time when sustainability is at the forefront of everyone's minds, this unit offered a clear path to greener operations, sparking many conversations on how it could be implemented on job sites.



## More Innovations to Come in 2025

Looking ahead, we're excited to continue innovating with the same energy and passion that we brought to this year's event. The future holds even more exciting developments for WOLFFKRAN, and we can't wait to share them with you.

**Mark your calendars—next year, you'll find us on Stand 425 at Vertikal Days, Newark Showground, on September 10th and 11th, 2025. We look forward to seeing you there!**



## Vita Load Navigator in action on the Chapter Living London Bridge project



We recently dismantled a crane at the Chapter Living London Bridge project using the Vita Load Navigator (VLN), demonstrating its exceptional precision and control. This advanced system detects real-time load movement and adjusts using high-powered fans, preventing spinning and other hazards.

The VLN was also key in helping Mace install precast cladding, enabling them to lift loads in wind speeds of up to 48kph—far above the usual 35kph limit. The system's precision eliminated the need for taglines, ensuring both efficiency and safety in tight spaces.

Most recently, the VLN was used to remove a 40-meter jib from one of the WOLFF cranes, lifting it in a single piece and smoothly loading it onto the street. This flawless execution proves the VLN's capabilities once again.

Stay tuned! We'll be sharing a video of this project soon. Follow us on social media for more updates!



# Celebrating WOLFFKRAN Employees'

## Achievements

### Irena Stec: Inspirational Leader 2024

We are thrilled to celebrate Irena Stec, who has been recognised as the 'Inspirational Leader – Supplier' at the 2024 CN, GE & NCE Inspiring Women in Construction & Engineering Awards!

The awards ceremony, held on September 17th at the Royal Lancaster Hotel in London, honored women who are breaking boundaries and making significant impacts in the industry.

Irena's journey with WOLFFKRAN Ltd began in 2014 as a trainee tower crane operator, and she has since grown into an inspirational leader. Her accomplishments, including becoming a CPCS Slinger Signaller, CPCS Appointed Person, and earning her Level 5 Planning Lifting Operations NVQ, are a testament to her dedication. Currently, she is Tower Crane Coordinator at the Powergate Project and has worked on major projects like 8 Bishopsgate.

*Irena's journey within our business and indeed the construction industry in general, is a very positive story and one which makes me immensely proud of both Irena and the supporting staff who have contributed to the success of this fantastic woman in construction," commented Dave Holder, European Operations Director at WOLFFKRAN AG.*

Irena's story is one of overcoming cultural and gender stereotypes, and we couldn't be prouder of her achievements. She continues to be a beacon of inspiration in a traditionally male-dominated field. As Irena says, "Don't be afraid, reach out early, learn, and be resilient."



### Steve Scott: Winner of the UK Plant Operator of the Year 2024

On Saturday, 21st September, the highly anticipated UK Plant Operator of the Year Competition took place at the CITB National Construction College, bringing together the best plant operators from across the country.

In the Tower Crane category, sponsored by WOLFFKRAN Ltd, 11 skilled operators faced off using the WOLFF 6023 Clear tower crane. The competition was fierce, with participants showcasing their precision and control in various challenging tasks, including accurate radius placements and load manoeuvring. Overseen by expert crane instructors from CITB, the event highlighted the incredible expertise needed for this critical role in construction.

We are proud to announce that Steve Scott, our Operators Manager, emerged as the winner of this year's Tower Crane Operator category. Steve's exceptional performance saw him claim victory in a thrilling finish, narrowly beating last year's champion by just seconds. His impressive skills earned him a well-deserved £2,500 prize.

Alongside the competition, the event had a vibrant family-friendly atmosphere, with onsite accommodation, great catering, and a variety of activities to entertain attendees and their families. It was a wonderful day that brought the plant operator community together in celebration.







**IN WOLFF  
WE TRUST**

SINCE 1854

Meet us at bauma

**07. – 13. April 2025**

**Stand FS 902/7**

## **Bauma 2025 – Here we go again!**

When we look at the photos from bauma 2022 it seems like yesterday, and it's already been two years. The next edition of the trade show, of which we are a faithful veteran, is approaching with milestones. So, ready, steady, go! The preparations have already started and are in full swing now.

The brainstorming of our R&D and product management experts has resulted in a long list of exhibits that we would like to present to our regular and new customers in April 2025 in Munich, Germany. The list includes, among others: already known WOLFF 7021 and WOLFF 8038 and two new crane models. Among other exhibits we will present the new chaRope® developed by the experts in the field TROWIS and our assistance technologies such as WOLFF HiSPS with intuitive Crane Control System and WOLFF Assist. But it is not all. WOLFF Onsite will join us with their wide range of accessories and equipment.

Come to Munich in Germany and join us from 7th till 13th April 2025 at our usual location FS 902/7 for a week of the latest technologies, some of which you haven't seen before, inspiring discussions with our experts and live demonstrations.

## **Stay Connected and in Control**

Introducing WOLFF LINK, our advanced data transmission system, designed specifically for WOLFF cranes. With live activity monitoring and diagnostics, WOLFF LINK enables efficient management, remote monitoring and optimised operational planning.

**[Check out our new WOLFF Link brochure to learn more!](#)**



**YOUR CRANES ALWAYS IN VIEW**

# Thanks for reading!



WOLFFKRAN Ltd.  
Grange Mill Lane  
Sheffield, S9 1HW  
United Kingdom  
+44 1709 55 96 68  
[www.wolffkran.com](http://www.wolffkran.com)