



**WOLFFKRAN**

## **WOLFF 7021 Clear:**

An installation champion  
with unrivalled  
tip load capacity

**INNOVATIVE - EFFICIENT - FLEXIBLE**



## The WOLFF 7021 Clear

### The true innovations are in the details: Introducing a flat-top powerhouse

**Bolstering the WOLFFKRAN portfolio:** With the WOLFF 7021 Clear, WOLFFKRAN introduces a model in the 224-mt class, which is unrivaled in terms of lifting capacities, assembly and maintenance.

**High performance in three variants:** The WOLFF 7021 Clear has been designed as a double-reeve crane. It is available in two editions, the WOLFF 7021.8 Clear with a lifting capacity of 8.5 tons and the WOLFF 7021.10 Clear with a lifting capacity of 10.5 tons. The 12-ton version is currently in development and will be available to order soon.

With its tip load capacity of 2.1 tons (2.3 tons with WOLFF Boost) at 70 meters of jib, this WOLFF is clearly ahead of the competition. The jib can be extended between 25 and 70 meters in 2.5-meter increments. Depending on the version, the WOLFF 7021 Clear is available with a 45 kW (8.5 and 10.5 tons) or a 67 kW hoisting gear (12.5 tons) as well as two slewing gears.

**Innovative Design:** In terms of design, the WOLFF 7021 Clear stands out thanks to its revolutionary lower boom connection as well as the technical equipment for operating the WOLFF High-Speed-Positioning-Systems (WOLFF HiSPS).

**Customized like never before:** The WOLFF 7021 Clear features customized equipment for various customer requirements. Optionally available with:

- Divisible, climbable lower part of the top for reduced installation weight or a non-divisible, non-climbable Eco lower part of the top
- Additional assembly platform on the (divisible) lower part of the top
- Central lubrication of the tooth flanks and lubrication pinion
- Auxiliary cranes for the maintenance of slewing gear and hoisting gear
- Pluggable connections for easy installation without a qualified electrician
- Working range limitation

### Available with two tower connections

WOLFF 7021 Clear is supplied with a combined UV 20/TV 20 tower connection as standard, which means that it can be installed freestanding on a 2 x 2 meter tower up to 72 meters. With a stronger 2.9 x 2.9 meter tower, it can work at up to 104 meters without tie-ins, making it ideal for use on a major construction site.

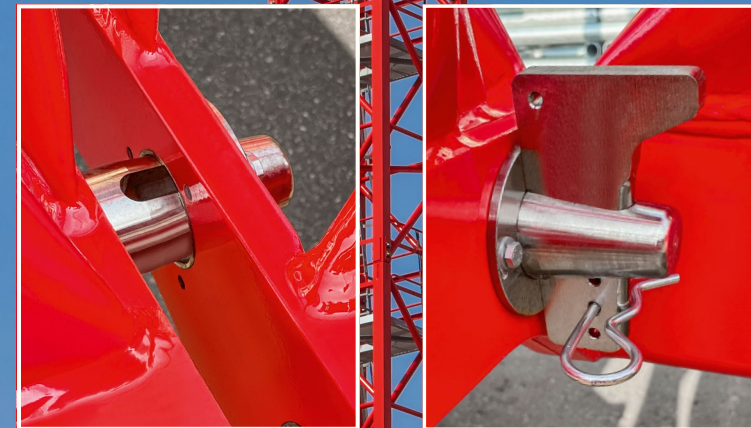
### Easy to assemble: The counter-jib reimagined

The newly designed ballast frame for the hoist winch is easy to fit and can be removed quite easily for transport thanks to the quick-release connection. The railings have also been redesigned. These are lighter and remain in place during transport. The optional auxiliary crane on the hoisting gear facilitates maintenance.



### Innovative jib design

The jib of the WOLFF 7021 Clear is particularly easy to assemble and maintain. The lower boom of the jib and the rope swivel traverse are assembled with a pin and wedge connection at the front instead of bolts. On the top chord, the bolts are inserted into holes, making assembly quick and easy without a hammer.





Clear(ly) Proven Qualities

New features of the WOLFF 7021 Clear

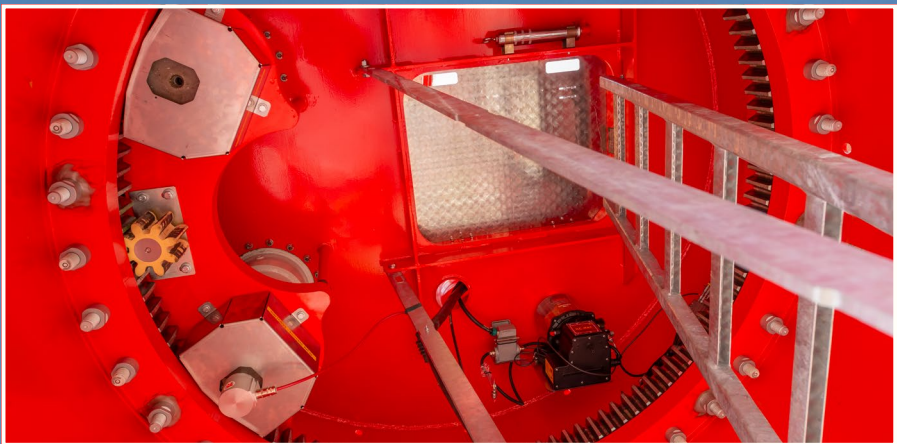
Ready for WOLFF HiSPS

The WOLFF 7021 Clear is technologically compatible with the WOLFF High Speed Positioning System (WOLFF HiSPS). It can be optionally acquired when purchasing the crane. With battery-operated sensors on the trolley and crane hook, the assistance system recognizes the rope movements and automatically adjusts the crane movements, allowing the load to be transported sway-free and positioned with millimeter precision. This technology significantly increases occupational safety and efficiency on the construction site, resulting in savings.



Centralized lubrication

The standard centralized lubrication of the slewing ring, with optional lubrication of the tooth flanks, ensures significantly reduced maintenance work. Upon request, a lubrication pinion (yellow) can be installed for precise lubrication and pinpoint distribution of lubricants.



Variable platform

An additional variable platform for the split assembly of the jib and anti-slip, wider walkways complement the new design and increase safety and efficiency when operating the crane.

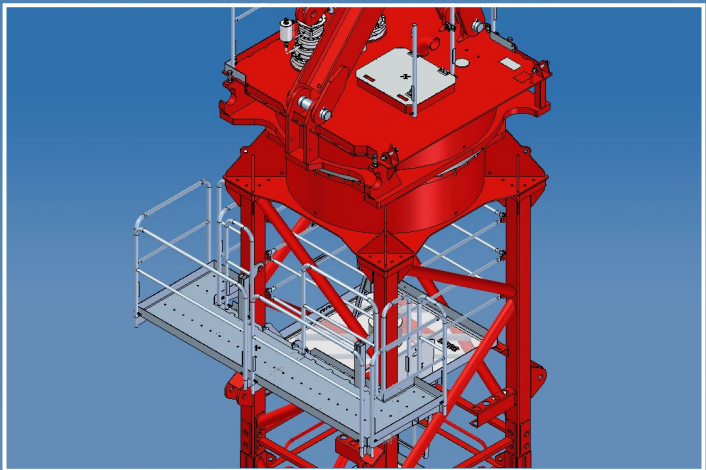
Divisible lower part of the top

The WOLFF 7021 Clear can optionally be ordered with a divisible lower part of the top, which reduces the assembly weight of the tower top section to up to 6.4 tons. In this version, the tower top section is equipped with an adapter for the UV/TV 20 tower system and is climbable.



Assembly platform

In the version with the divisible lower part of the top, the tower top section can be optionally fitted with an assembly platform, which facilitates accessibility and ensures greater occupational safety.

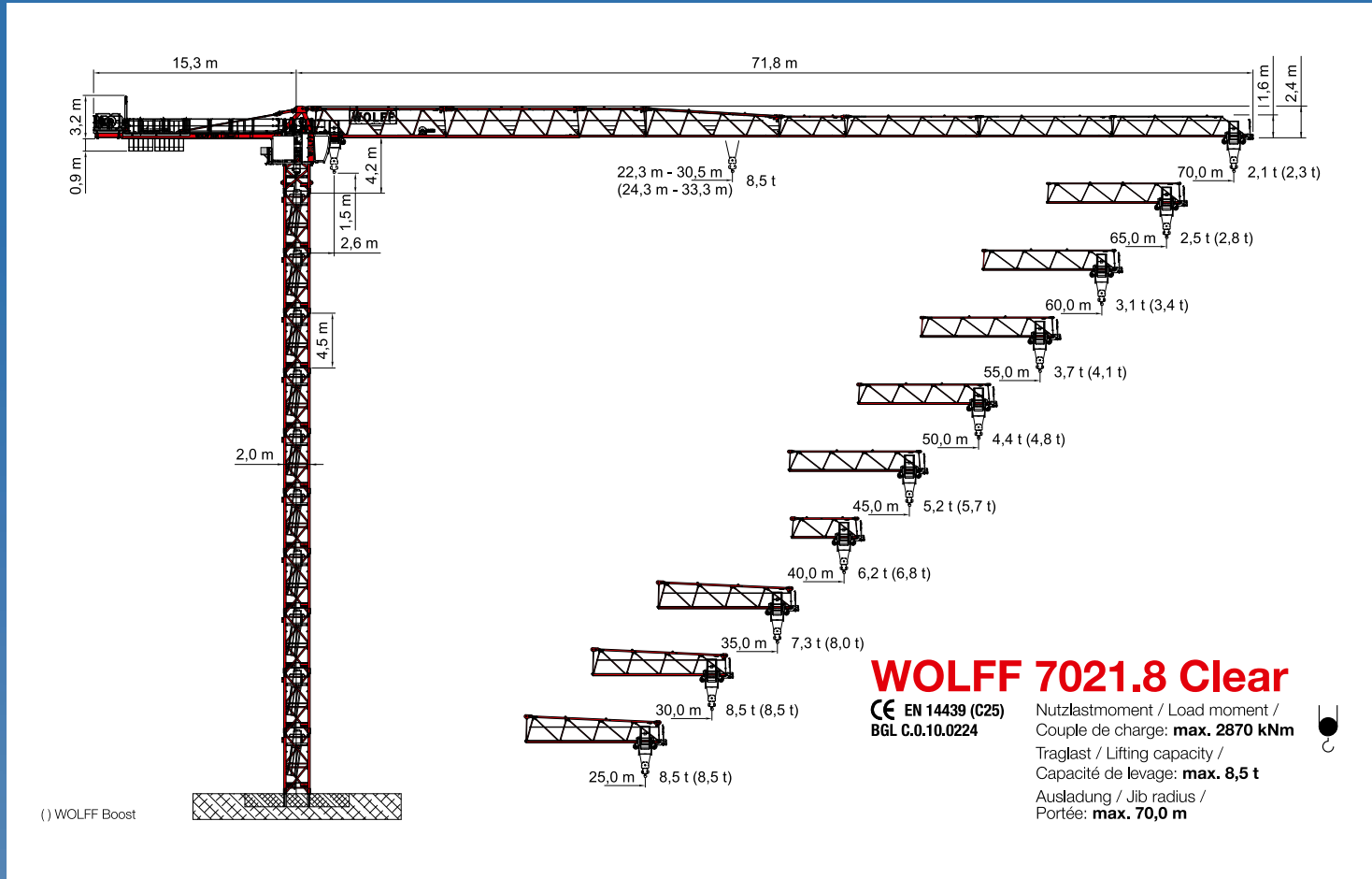




# WOLFF 7021.8 Clear


## Technical Information WOLFF 7021.8

## Plan drawing • WOLFF 7021.8 Clear



## Load chart (t) • WOLFF 7021.8 Clear

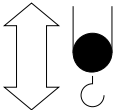
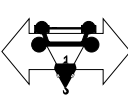
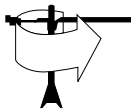
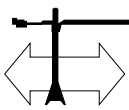
Ausladung / Jib radius / Portée (m)			25	30	35	40	45	50	55	60	65	70
Auslegerlänge / Jib length / Longueur de flèche (m)	70	2,6 • 22,3	7,5	6,1	5,1	4,4	3,8	3,3	2,9	2,6	2,3	<b>2,1</b>
	65	2,6 • 23,5	7,9	6,5	5,4	4,6	4,0	3,5	3,1	2,8	<b>2,5</b>	
	60	2,6 • 25,5	8,5	7,1	6,0	5,1	4,4	3,9	3,5	<b>3,1</b>		
	55	2,6 • 26,9	8,5	7,5	6,3	5,4	4,7	4,2	<b>3,7</b>			
	50	2,6 • 28,2	8,5	7,9	6,7	5,7	5,0	<b>4,4</b>				
	45	2,6 • 29,2	8,5	8,3	6,9	6,0	<b>5,2</b>					
	40	2,6 • 30,2	8,5	8,5	7,2	<b>6,2</b>						
	35	2,6 • 30,5	8,5	8,5	<b>7,3</b>							
30	2,6 • 30,0	8,5	<b>8,5</b>									
25	2,6 • 25,0	<b>8,5</b>										



**8,5 t**

Tragfähigkeit / Load capacity / Capacité de charge (t)

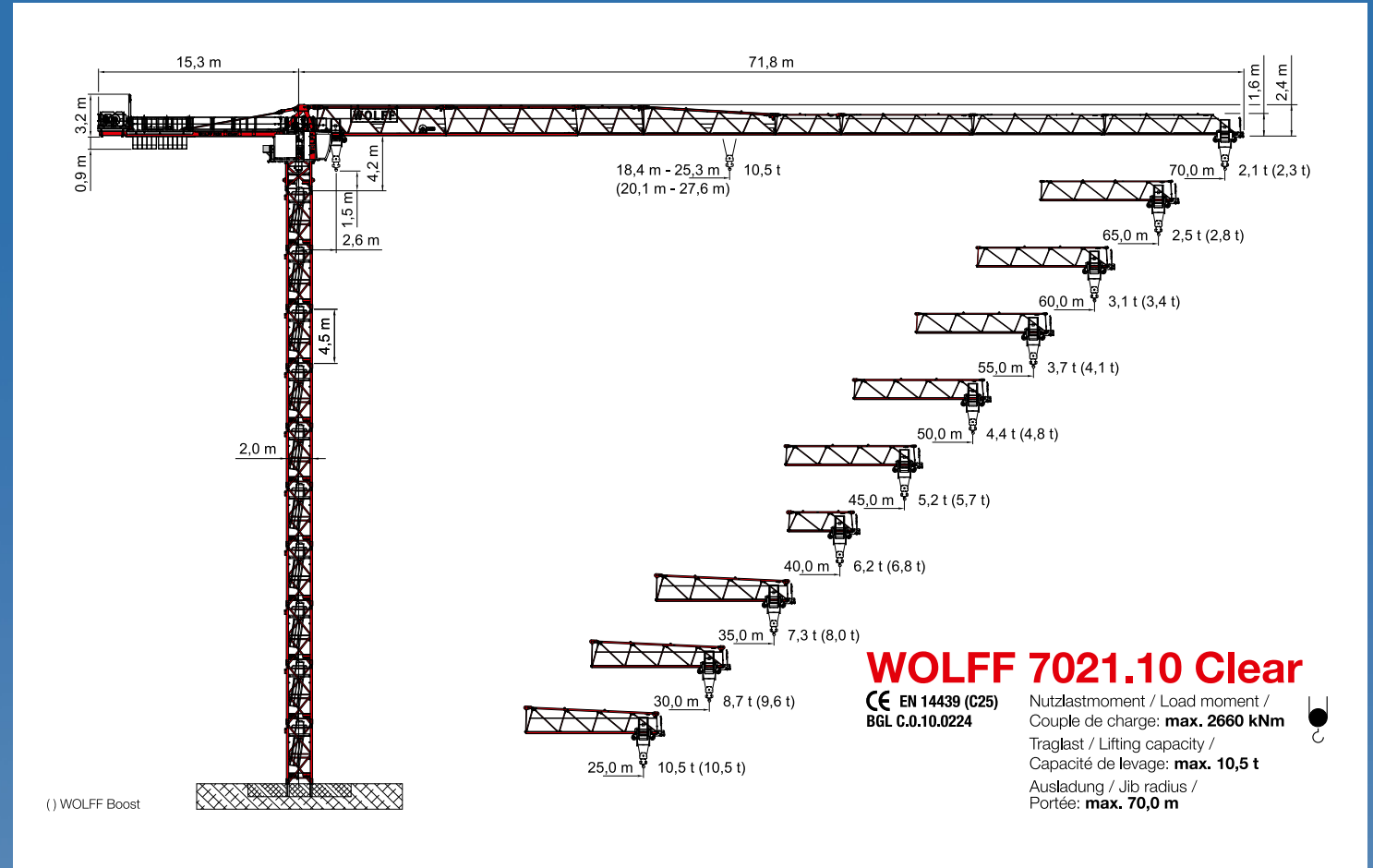
## Drives • WOLFF 7021.8 Clear

Antriebe · WOLFF 7021,8 Clear · (Hw 845 FU)				
Mechanisms Mécanismes				
				
Motor (kW) Motor Moteur	45	6,0	2 x 6,0	2 x 5,5
Geschwindigkeit Speed Vitesse	0 - 1,2 t 0 ... 115 m/min stufenlos/ stepless/ en continue 0 - 8,5 t 0 ... 26 m/min	0 - 0 t 0 ... 100 m/min stufenlos/ stepless/ en continue 0 - 8,5 t 0 ... 45 m/min	0,8 min <sup>-1</sup>	25 m/min
Hakenweg (m) Hook path Course du crochet	190			

# WOLFF 7021.10 Clear

## Technical information WOLFF 7021.10

## Plan drawing • WOLFF 7021.10 Clear




## Load chart (t) • WOLFF 7021.10 Clear

Traglasten (t) - WOLFF 7021-10 Clear

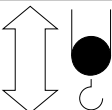
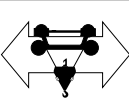
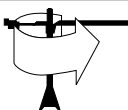
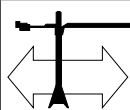
Load Data

Charges

Ausladung / Jib radius / Portée (m)			20	25	30	35	40	45	50	55	60	65	70	
Auslegerlänge / Jib length / Longueur de fleche (m)	70	2,6 - 18,4	 10,5 t	9,6	7,5	6,1	5,1	4,4	3,8	3,3	2,9	2,6	2,3	<b>2,1</b>
	65	2,6 - 19,4		10,2	7,9	6,5	5,4	4,6	4,0	3,5	3,1	2,8	<b>2,5</b>	
	60	2,6 - 21,1		10,5	8,7	7,1	6,0	5,1	4,4	3,9	3,5	<b>3,1</b>		
	55	2,6 - 22,2		10,5	9,2	7,5	6,3	5,4	4,7	4,2	<b>3,7</b>			
	50	2,6 - 23,2		10,5	9,7	7,9	6,7	5,7	5,0	<b>4,4</b>				
	45	2,6 - 24,1		10,5	10,1	8,3	6,9	6,0	<b>5,2</b>					
	40	2,6 - 24,9		10,5	10,5	8,6	7,2	<b>6,2</b>						
	35	2,6 - 25,2		10,5	10,5	8,7	<b>7,3</b>							
	30	2,6 - 25,3		10,5	10,5	<b>8,7</b>								
25	2,6 - 25,0	10,5	<b>10,5</b>											

Tragfähigkeit / Load capacity / Capacité de charge (t)

## Drives • WOLFF 7021.10 Clear

Antriebe - WOLFF 7021.10 Clear - (Hw 1045 FU)				
Mechanisms Mécanismes				
				
Motor (kW) Motor Moteur	45	8,0	2 x 6,0	2 x 5,5
Geschwindigkeit Speed Vitesse	0 - 1,0 t 0 ... 94 m/min stufenlos/ stepless/ en continue 0 - 10,5 t 0 ... 21,5 m/min	0 t 0 ... 100 m/min stufenlos/ stepless/ en continue 0 - 10,5 t 0 ... 55 m/min	0,8 min <sup>-1</sup>	25 m/min
Hakenweg (m) Hook path Course du crochet	190			

# The WOLFF Standard

## ***Best all-round visibility from the WOLFF CAB***

The WOLFF CAB crane cabin offers optimum visibility and overview. The adjustable seat and ergonomically designed control panels allow for fatigue-free working. Tinted windows, quality blinds, an effective heating system and air conditioning ensure a comfortable working environment, regardless of season or climate zone. Further amenities such as a radio with SD/USB ports and Bluetooth, a drinks cooler, plenty of sockets and ample storage space are also included as standard. An easy-to-read 7-inch touchscreen color monitor optimally supports the crane operator.



## ***Economical transportation on land and water***

All components of the WOLFF clear cranes are designed to fit on regular trucks. The WOLFF 7021 Clear can be transported on three trucks (country and vehicle-specific restrictions may apply) or on four regular trucks. All crane components can be safely and quickly loaded and unloaded. If a WOLFF clear crane needs to travel overseas, no problem, all standard crane and tower components are container compatible.



## ***Everything under (WOLFF crane) control***

WOLFF cranes are fitted with the latest crane controls to ensure highest levels of safety. They adjust the performance of all drives to the requirements of the job site and support the crane operator with many security features, such as overload protection, working range limitation and an anti-collision interface. Also integrated as standard is the WOLFF Boost function increasing load capacity by 10%, as well as the remote data transmission system WOLFF Link facilitating maintenance and repairs



## ***Best service for best performance***

WOLFF cranes are fitted with platforms, railings and further elements designed to increase safety around all major crane components and parts. Further, all WOLFF cranes feature an electrical central lubrication of the slew ring, a slip ring mechanism for optimal signal transmission and a temperature-controlled switch cabinet with heating and ventilation ensuring efficient and uninterrupted operating time of the crane. Together with the remote maintenance options offered by WOLFF Link, the WOLFF Assist Service Glasses (optional) and the experienced quick-response WOLFF Service-Teams nearby, you can rest assured that the WOLFF cranes on your site will perform day in, day out.



**WOLFFKRAN International AG**  
Hinterbergstrasse 17  
CH-6330 Cham  
Switzerland  
Phone: +41 41 766 85 75  
info@wolffkran.com

**Der Leitwolf**  
*The leader of the pack.*

[www.wolffkran.com](http://www.wolffkran.com)

